

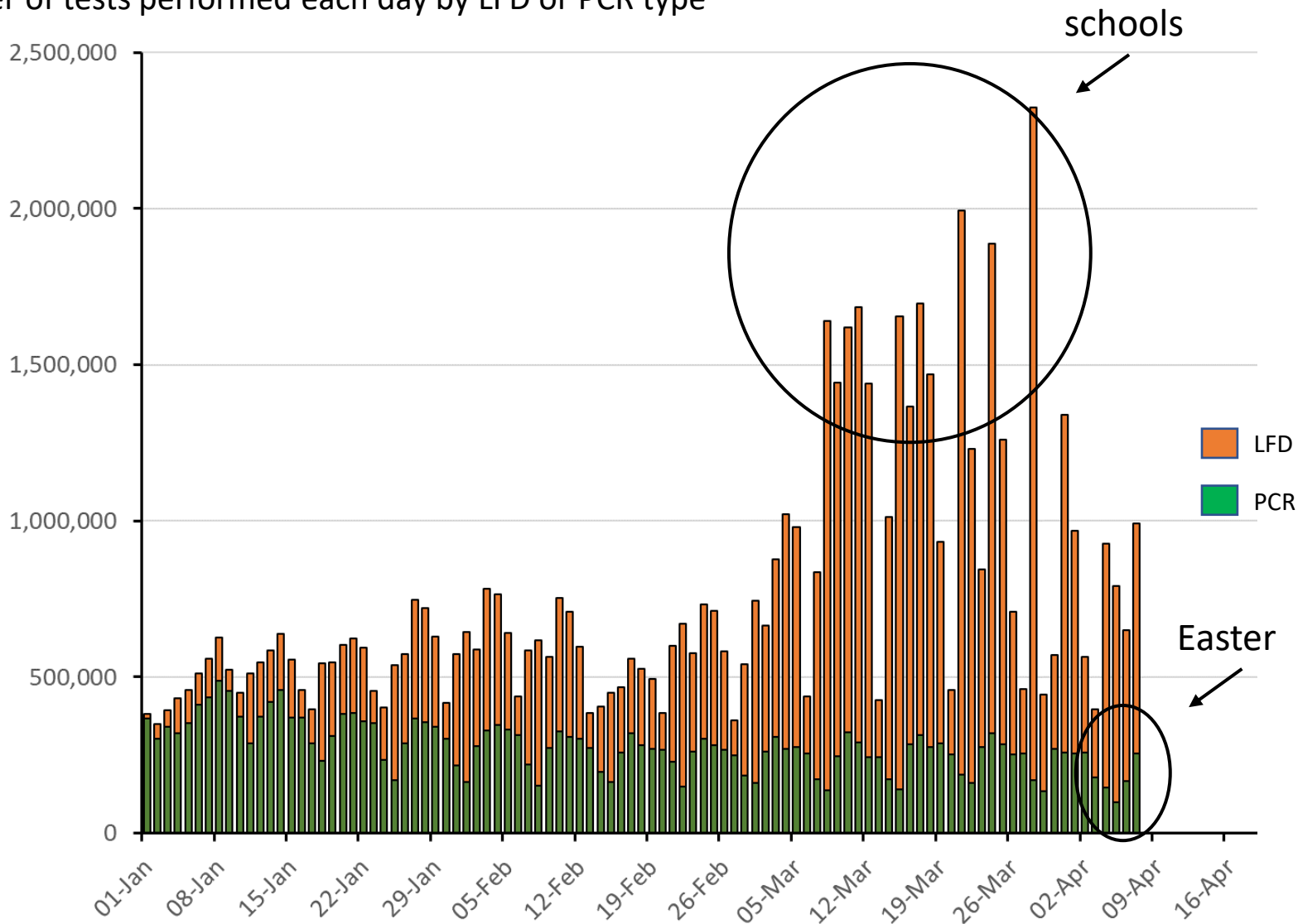
Things are continuing to get better but clear North / South difference in England.

1. Cases
2. Hospitalisations & Deaths
4. Vaccinations
5. Schools
6. Mass testing

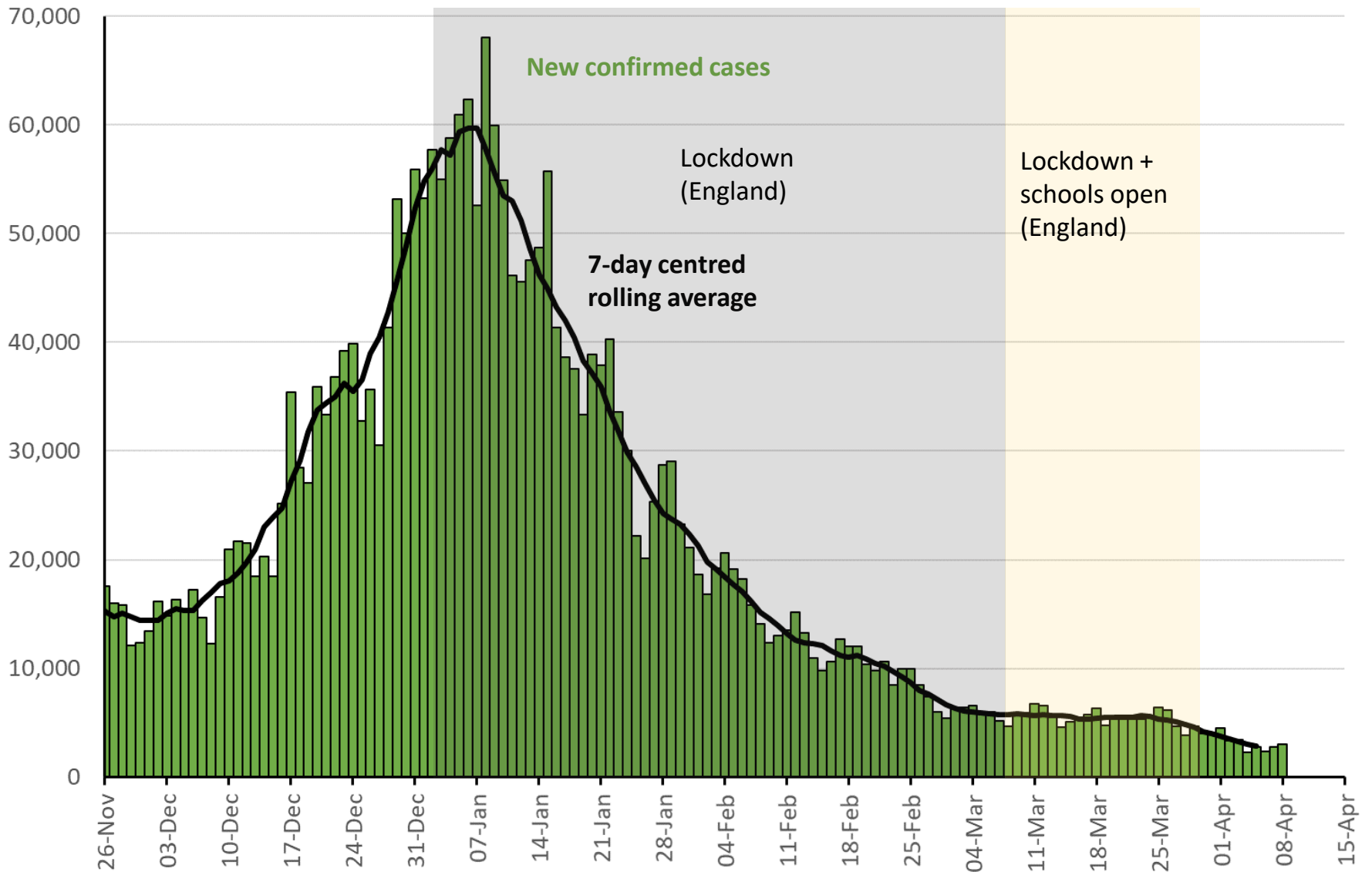
Cases

# Testing in England (to 7<sup>th</sup> April)

Number of tests performed each day by LFD or PCR type

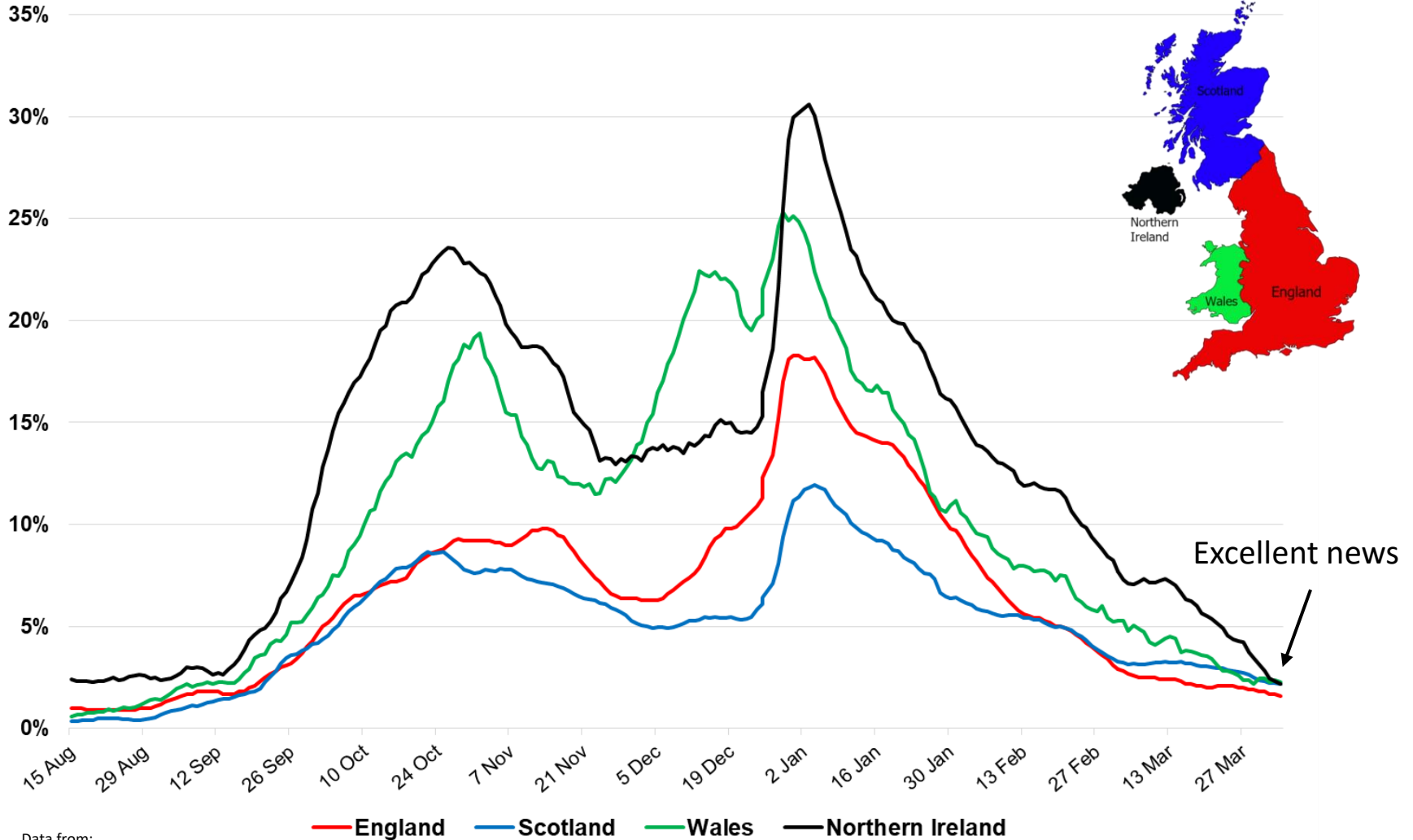


# Number of new UK confirmed COVID-19 cases by reported date (people who have had a positive test)



# Positivity rates – UK nations – by date of test to 3<sup>rd</sup> April

% of people tested who are positive



Data from:

Scotland: <https://www.opendata.nhs.scot/dataset/covid-19-in-Scotland>

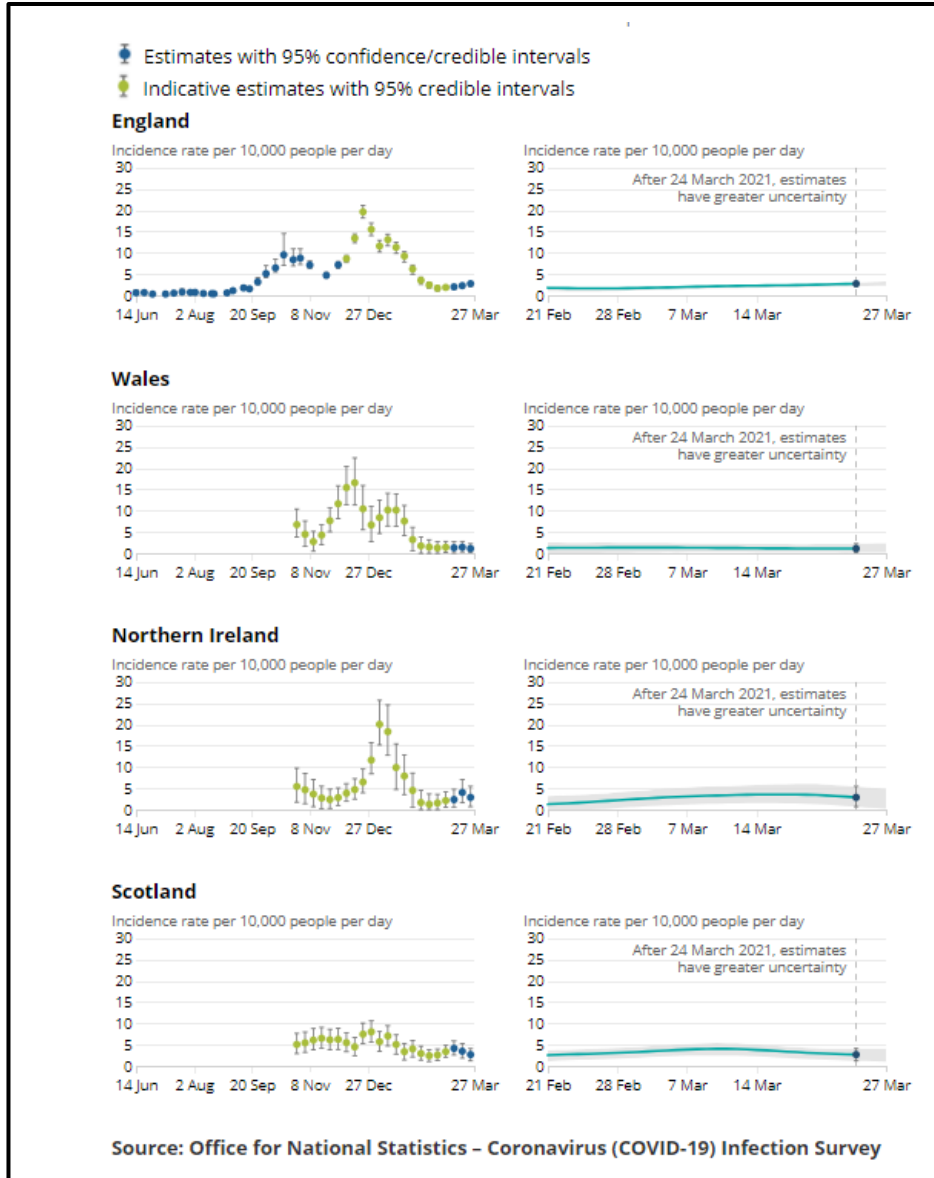
Wales: <https://public.tableau.com/profile/public.health.wales.health.protection#!/vizhome/RapidCOVID-19virology-Public/Headlinesummary>

NI: <https://www.health-ni.gov.uk/publications/daily-dashboard-updates-covid-19-november-2020>

England: <https://coronavirus.data.gov.uk> . ONS <https://www.ons.gov.uk/peoplepopulationandcommunity/healthandsocialcare/conditionsanddiseases/bulletins/coronaviruscovid19infectionsurveys/pilot/latest>

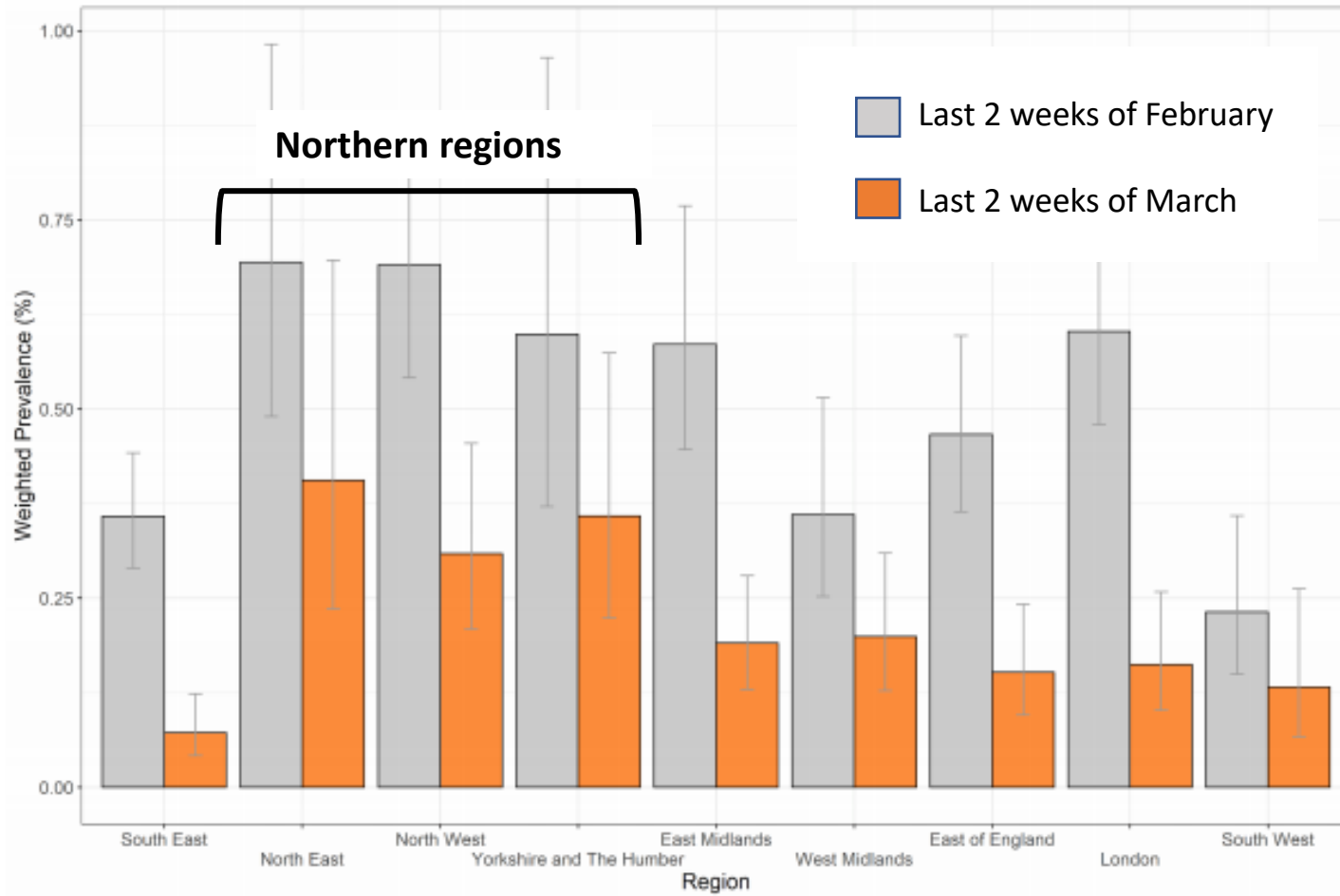
Visualisation courtesy of Bob Hawkins

# Incidence rate (new infections) by nation to 3<sup>rd</sup> April – ONS



In terms of people testing positive overall, we are back where we were mid September 2020, but still almost **ten** times higher than the lowest point last July.

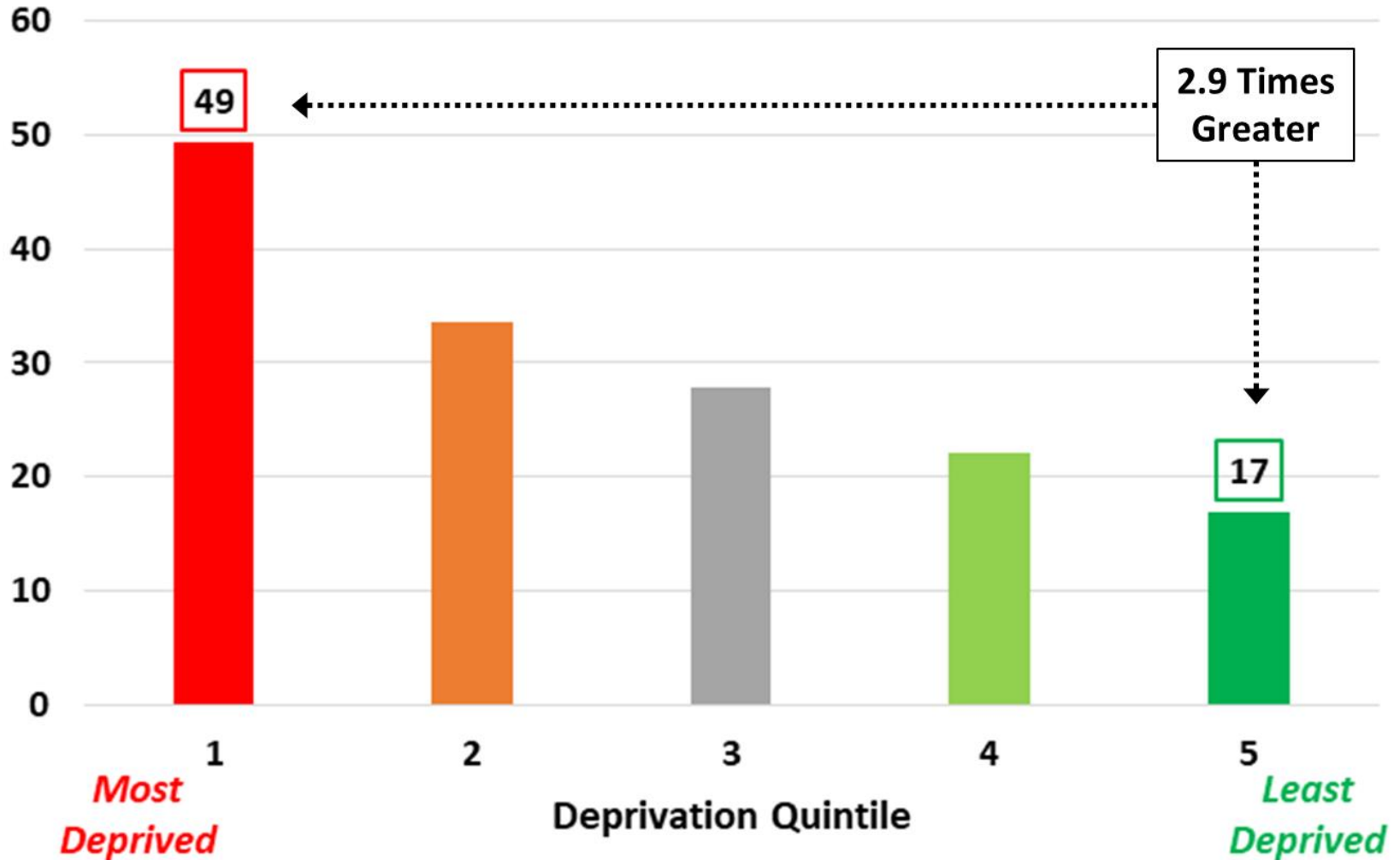
# Regional distribution of cases – Imperial REACT study (England)



**Figure 2.** Weighted prevalence of swab-positivity by region for rounds 9 and 10. Bars show 95% confidence intervals. See Table 4.

# Deprived areas have much higher rates of Covid-19 as we emerge from lockdown

Cases per 100,000 people per week

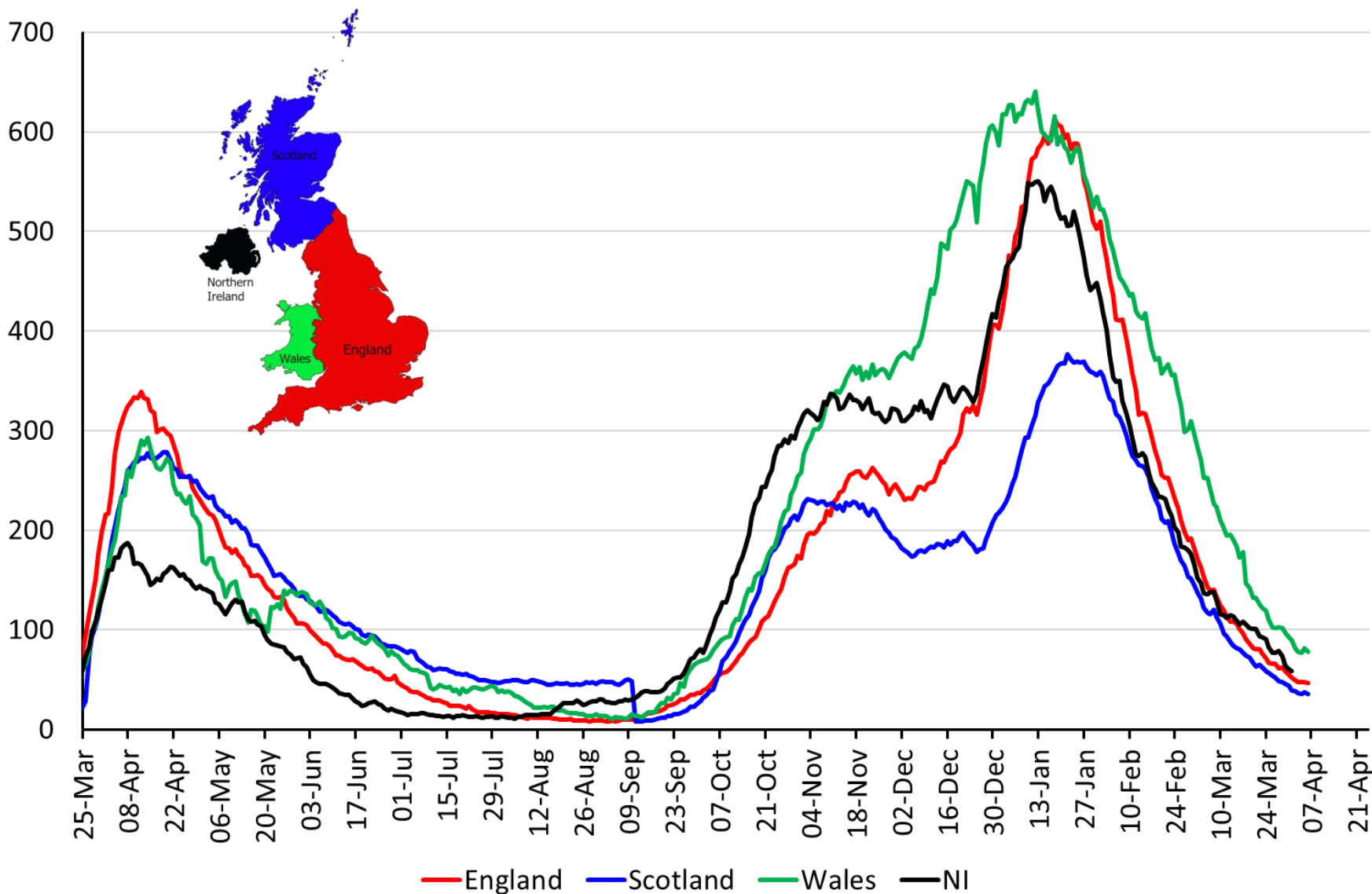


Sources: Covid Daily Update and Deprivation Data provided by Tom Worth  
 Thank you to Bob Hawkins for the chart

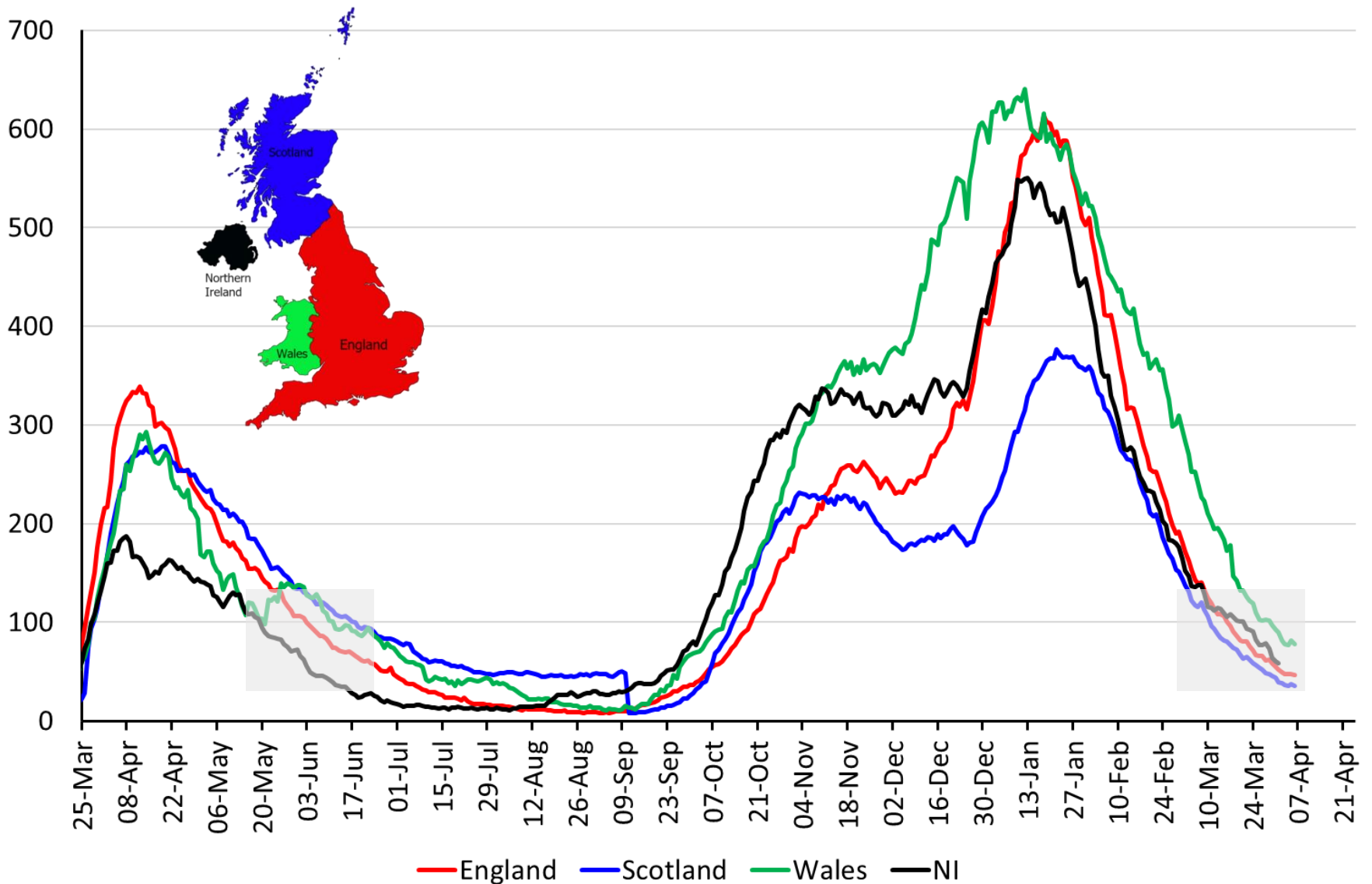


# Hospitalisations and Deaths

# Number of people in hospital per million people – UK nations to 6 April

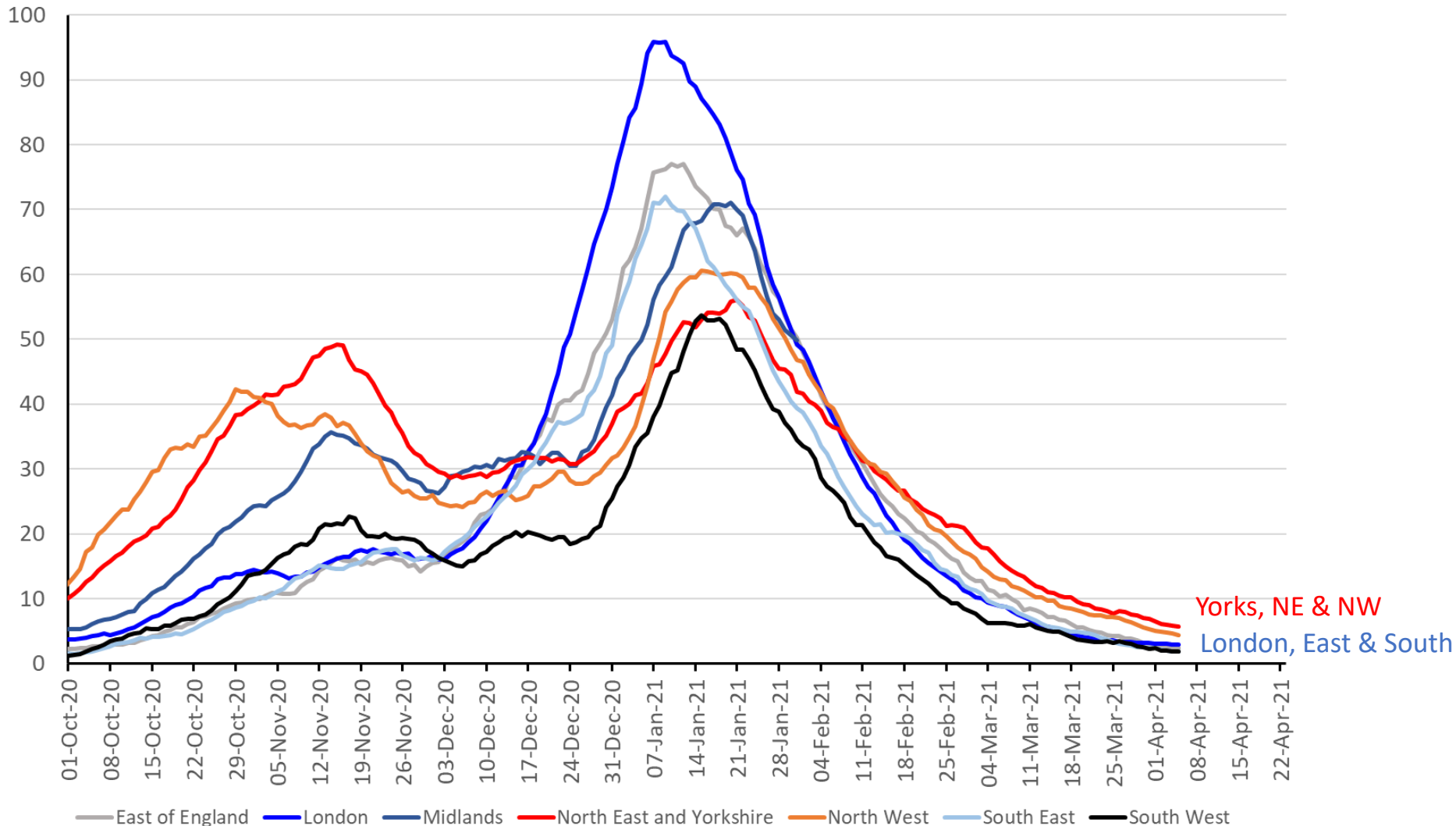


# Number of people in hospital per million people – UK nations to 6 April



# Hospital admission rates: English regions (to 5<sup>th</sup> April)

Admissions per million people (7 day rolling average)



Yorks, NE & NW  
London, East & South

# Hospitalisations by age group, England to 28 March

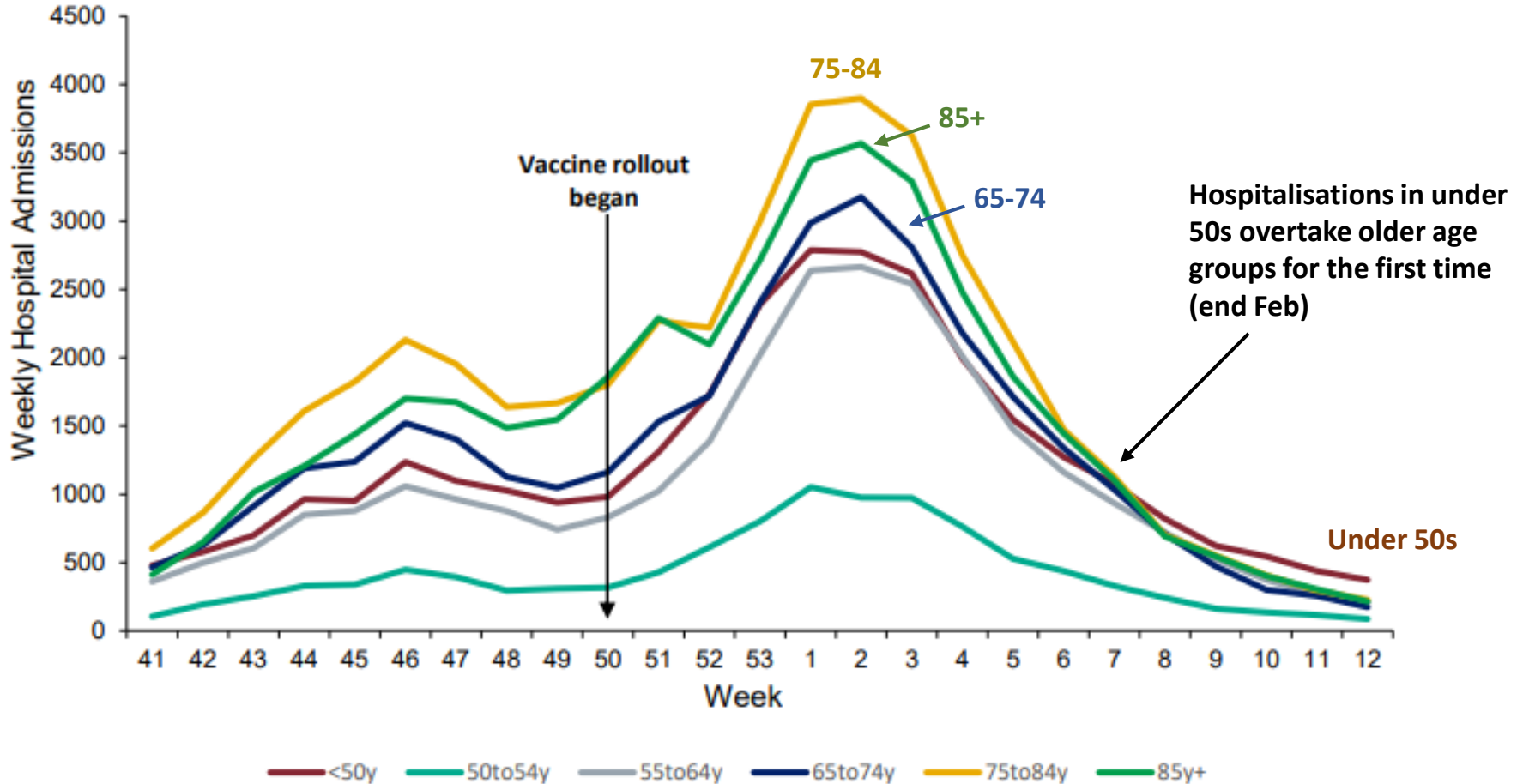
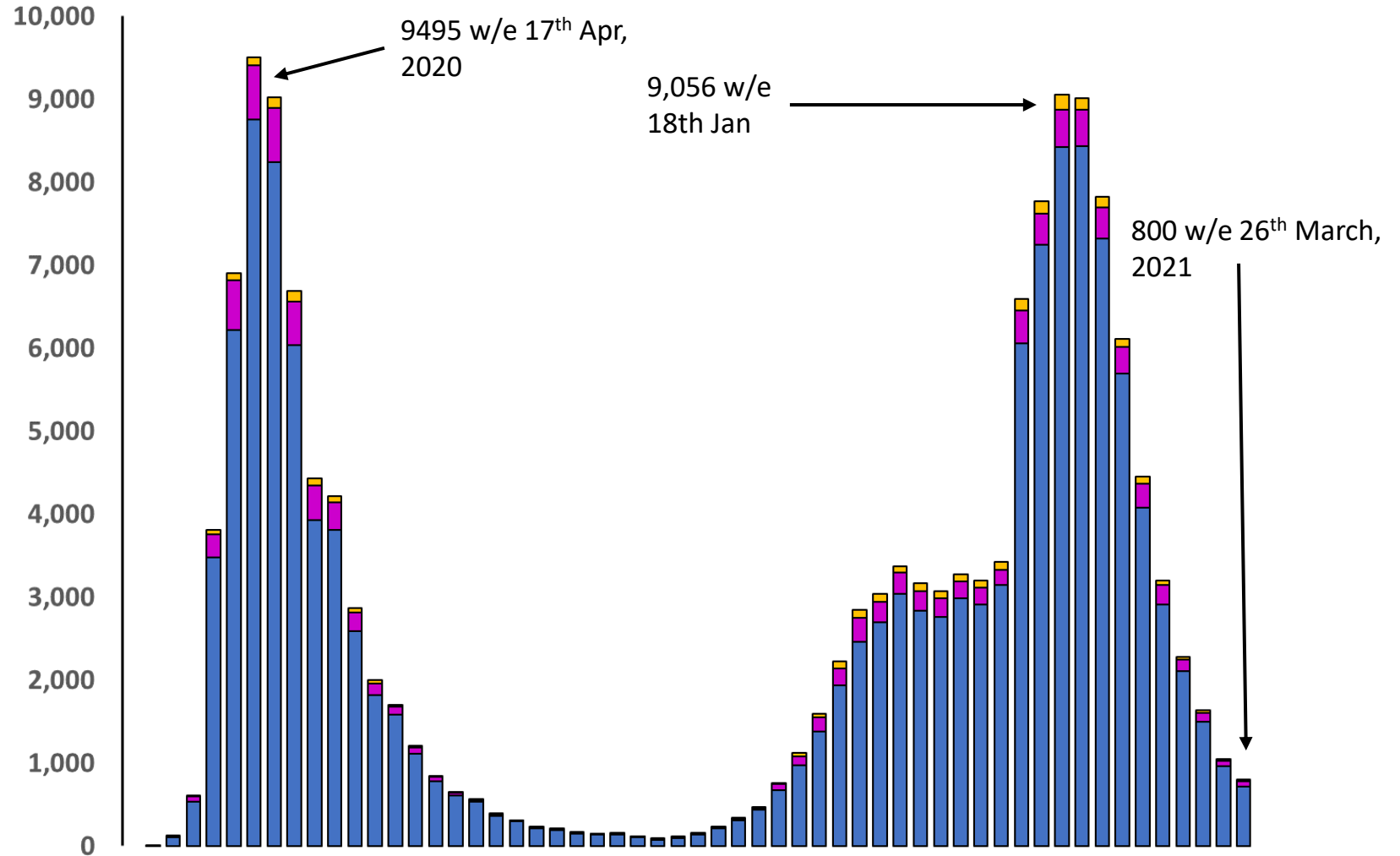


Chart from [https://assets.publishing.service.gov.uk/government/uploads/system/uploads/attachment\\_data/file/975534/Weekly\\_COVID-19\\_and\\_Influenza\\_Surveillance\\_Graphs\\_w13.pdf](https://assets.publishing.service.gov.uk/government/uploads/system/uploads/attachment_data/file/975534/Weekly_COVID-19_and_Influenza_Surveillance_Graphs_w13.pdf)

# Number of new UK deaths from COVID-19 per week to week ending 26<sup>th</sup> March



Data from :

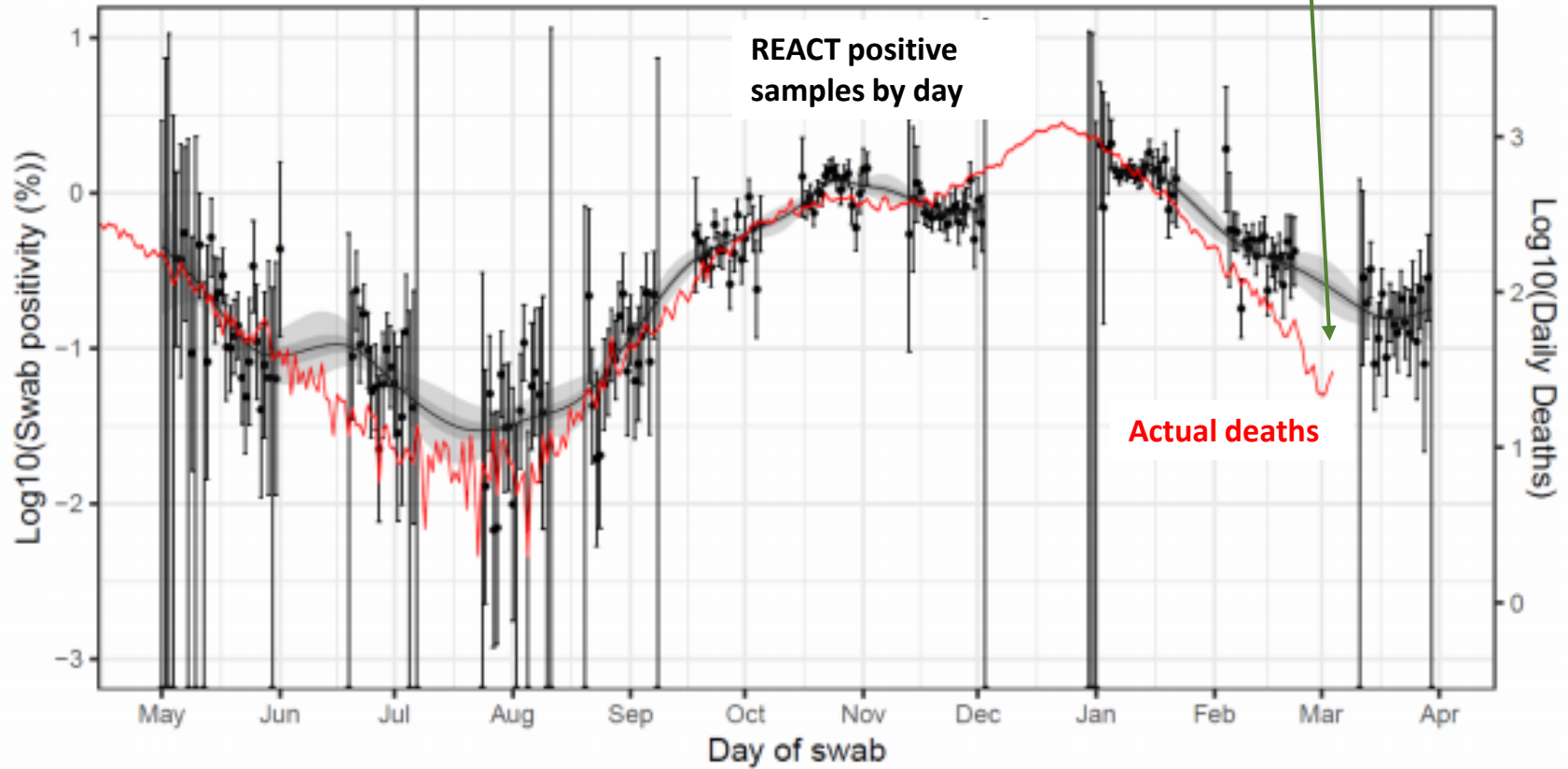
England and Wales: [www.ons.gov.uk/peoplepopulationandcommunity/birthsdeathsandmarriages/deaths/bulletins/deathsregisteredweeklyinenglandandwalesprovisional/latest](http://www.ons.gov.uk/peoplepopulationandcommunity/birthsdeathsandmarriages/deaths/bulletins/deathsregisteredweeklyinenglandandwalesprovisional/latest)

Scotland: <https://data.gov.scot/coronavirus-covid-19/detail.html>

Northern Ireland: [www.nisra.gov.uk/publications/weekly-deaths](http://www.nisra.gov.uk/publications/weekly-deaths)

# Deaths compared to what you might expect given infections – Imperial REACT study 8 April 2021

This deviation means that **fewer** people are dying than you would have expected - > likely the **vaccine impact!**

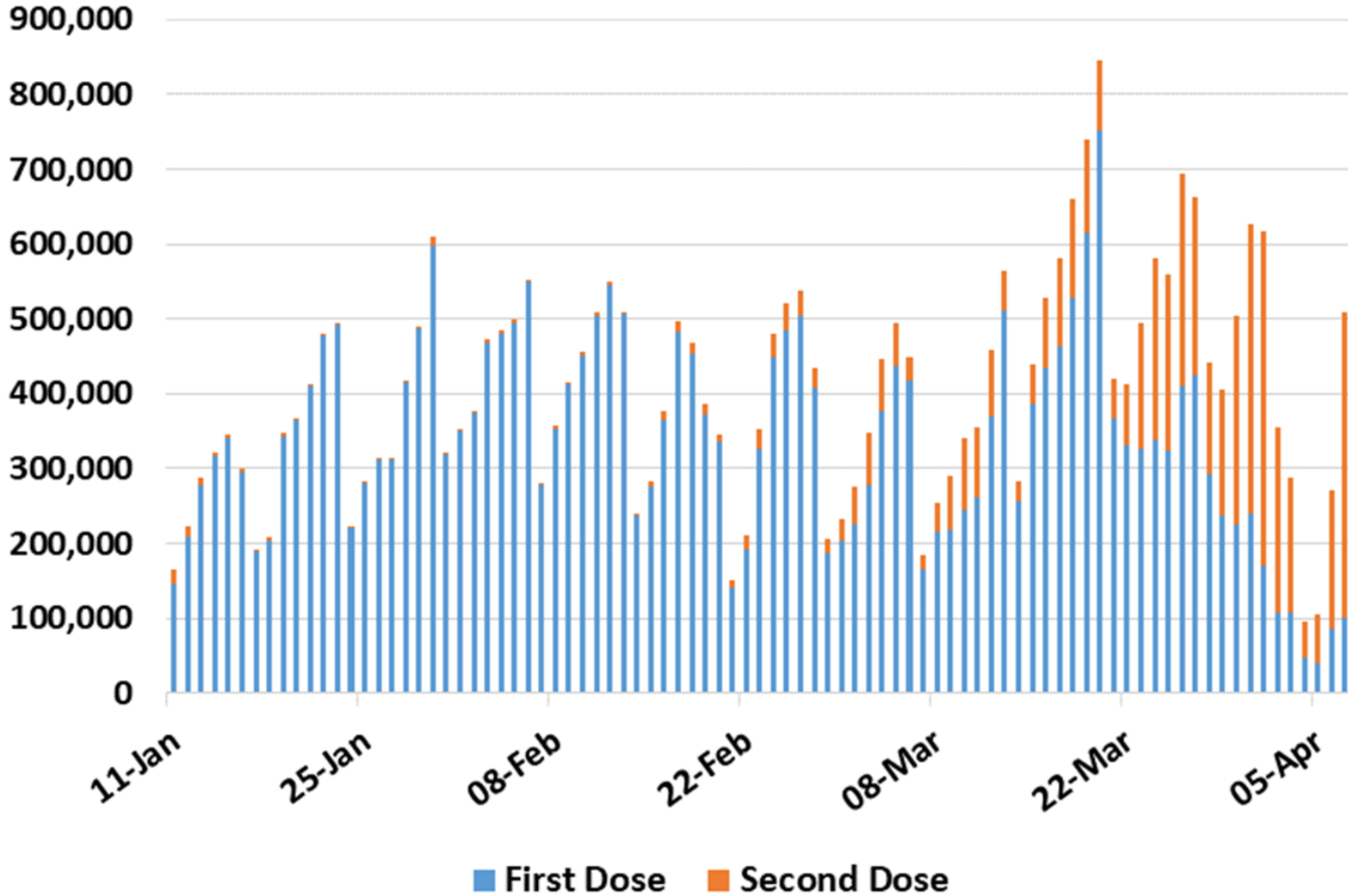


Vaccination data



# Number of 1<sup>st</sup> and 2<sup>nd</sup> doses given by day in the UK to 7<sup>th</sup> April

1.6 million people received a jab in the week to 7<sup>th</sup> April.

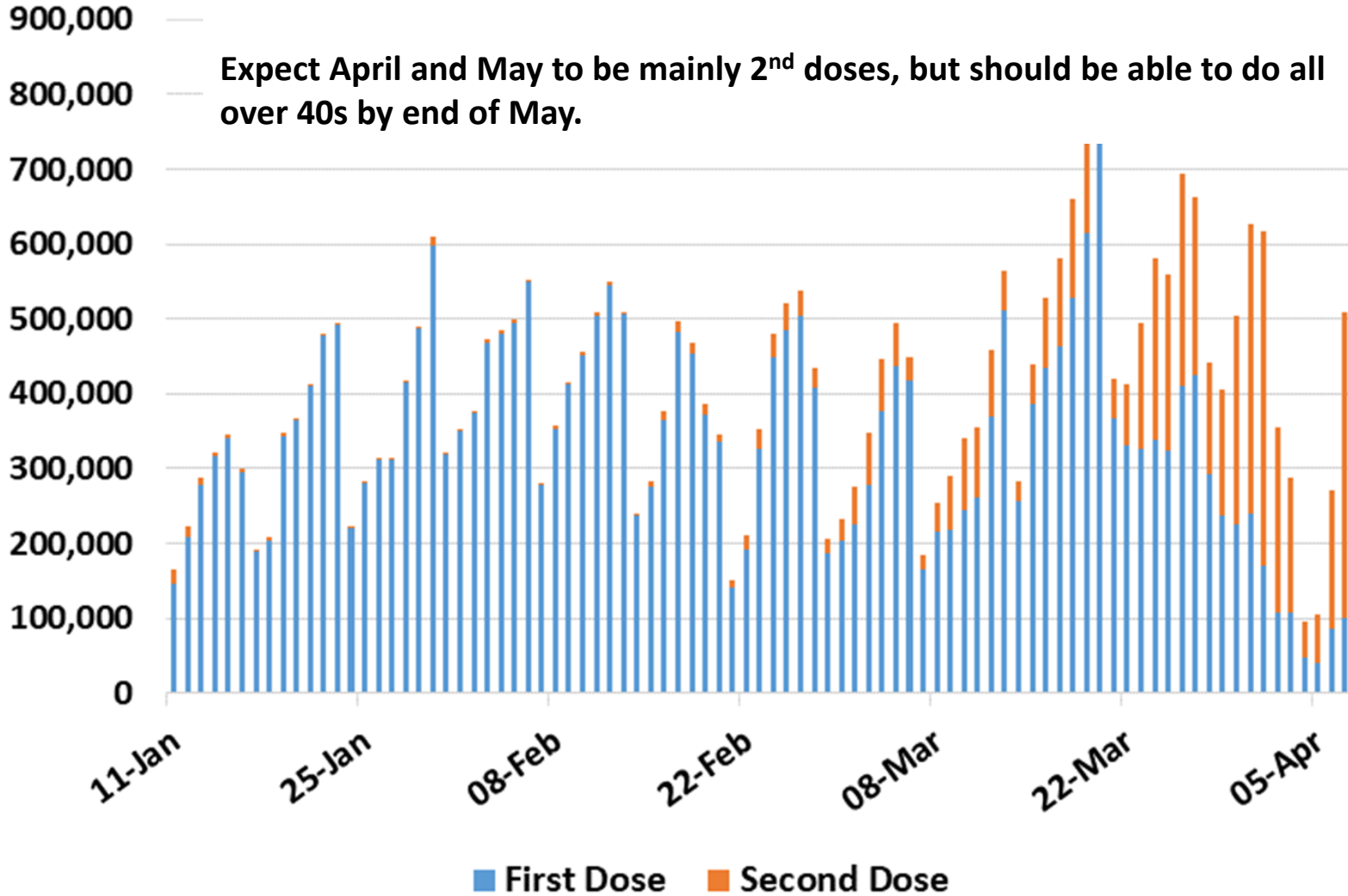


Data from <https://coronavirus.data.gov.uk/>  
Thanks to Bob Hawkins for the chart

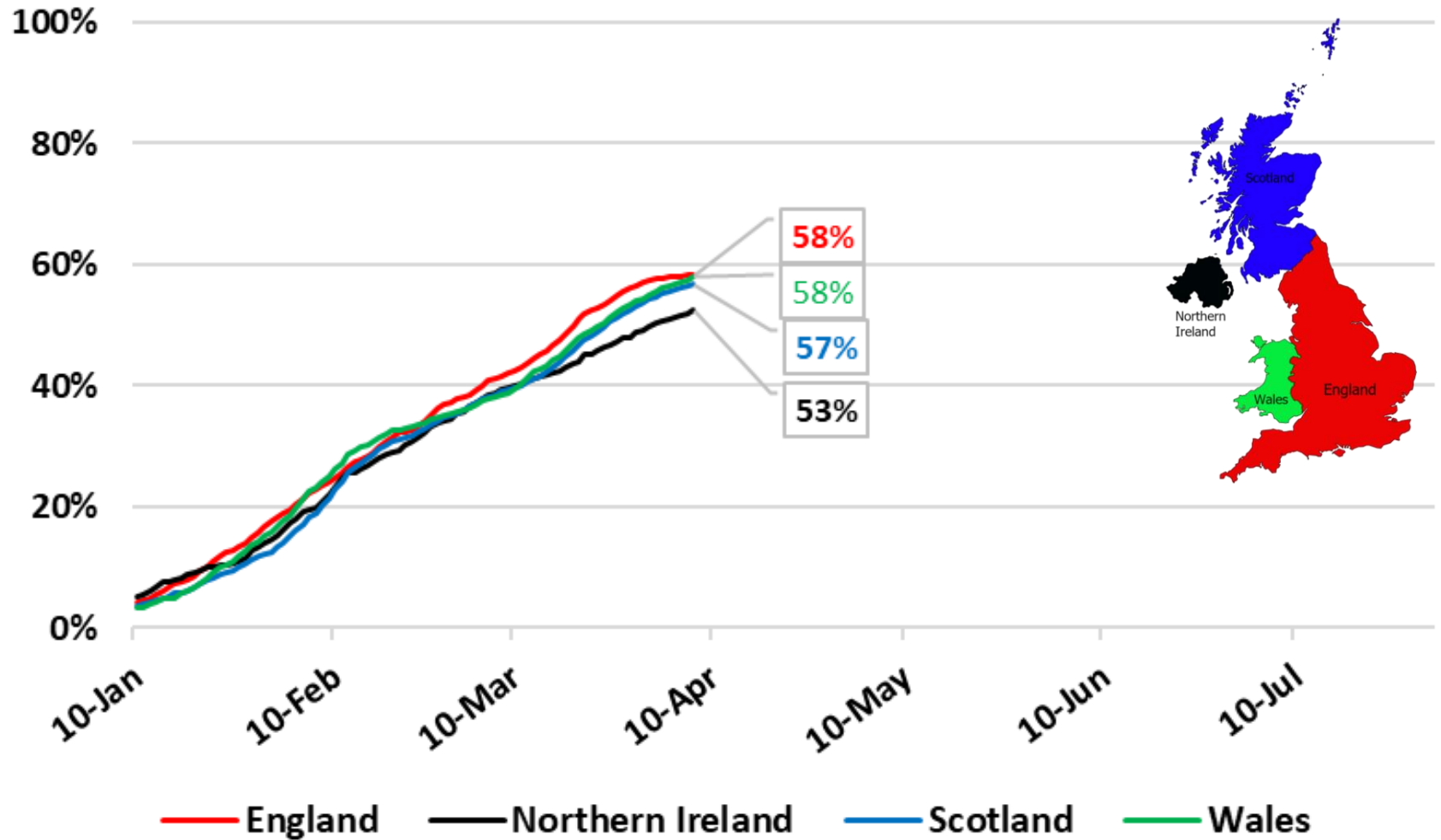
# Number of 1<sup>st</sup> and 2<sup>nd</sup> doses given by day in the UK to 7<sup>th</sup> April

1.6 million people received a jab in the week to 7<sup>th</sup> April.

Expect April and May to be mainly 2<sup>nd</sup> doses, but should be able to do all over 40s by end of May.



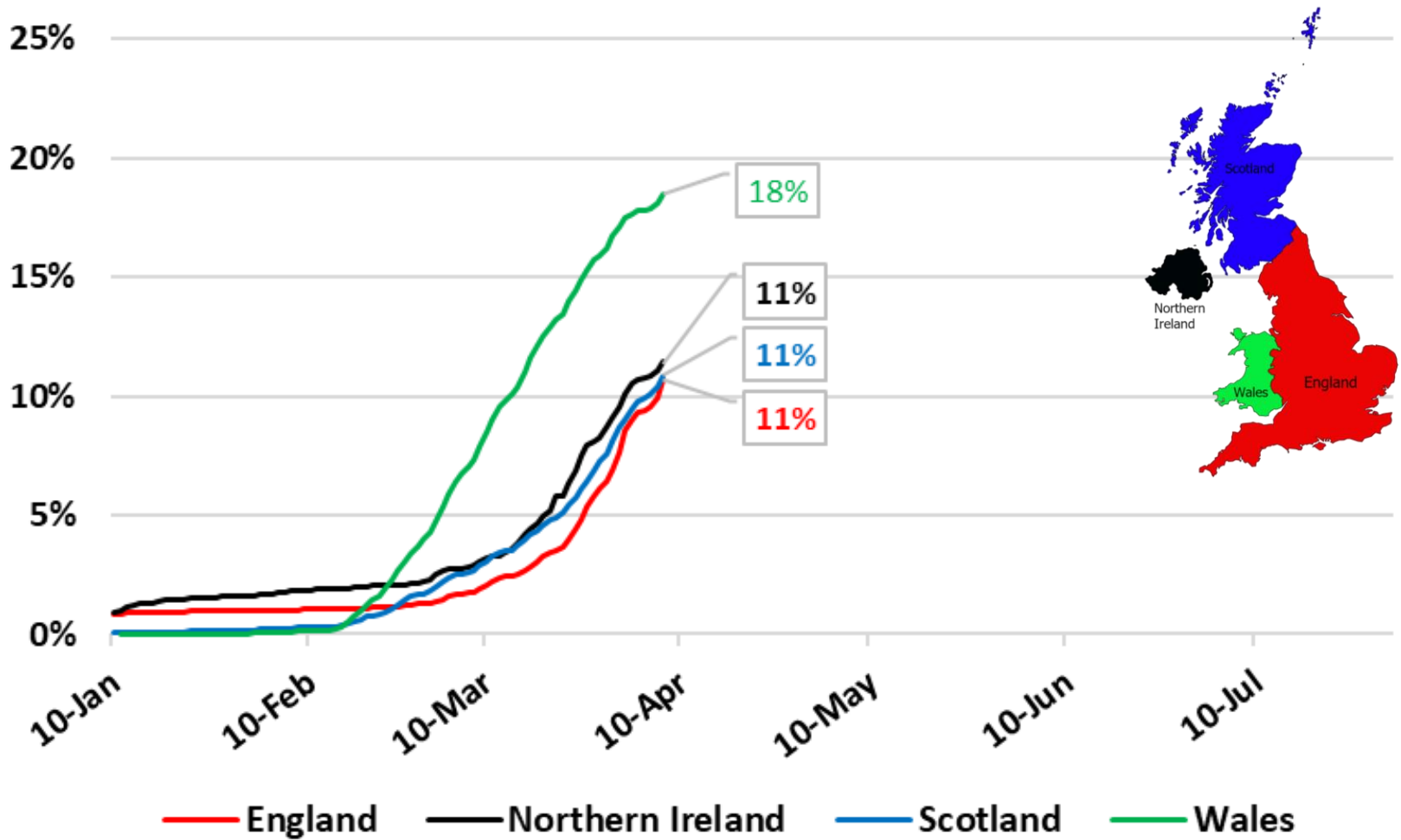
# Proportion of adults given at least one dose over time for each nation to 17<sup>th</sup> March



Data from <https://coronavirus.data.gov.uk/>

Thanks to Bob Hawkins for the chart

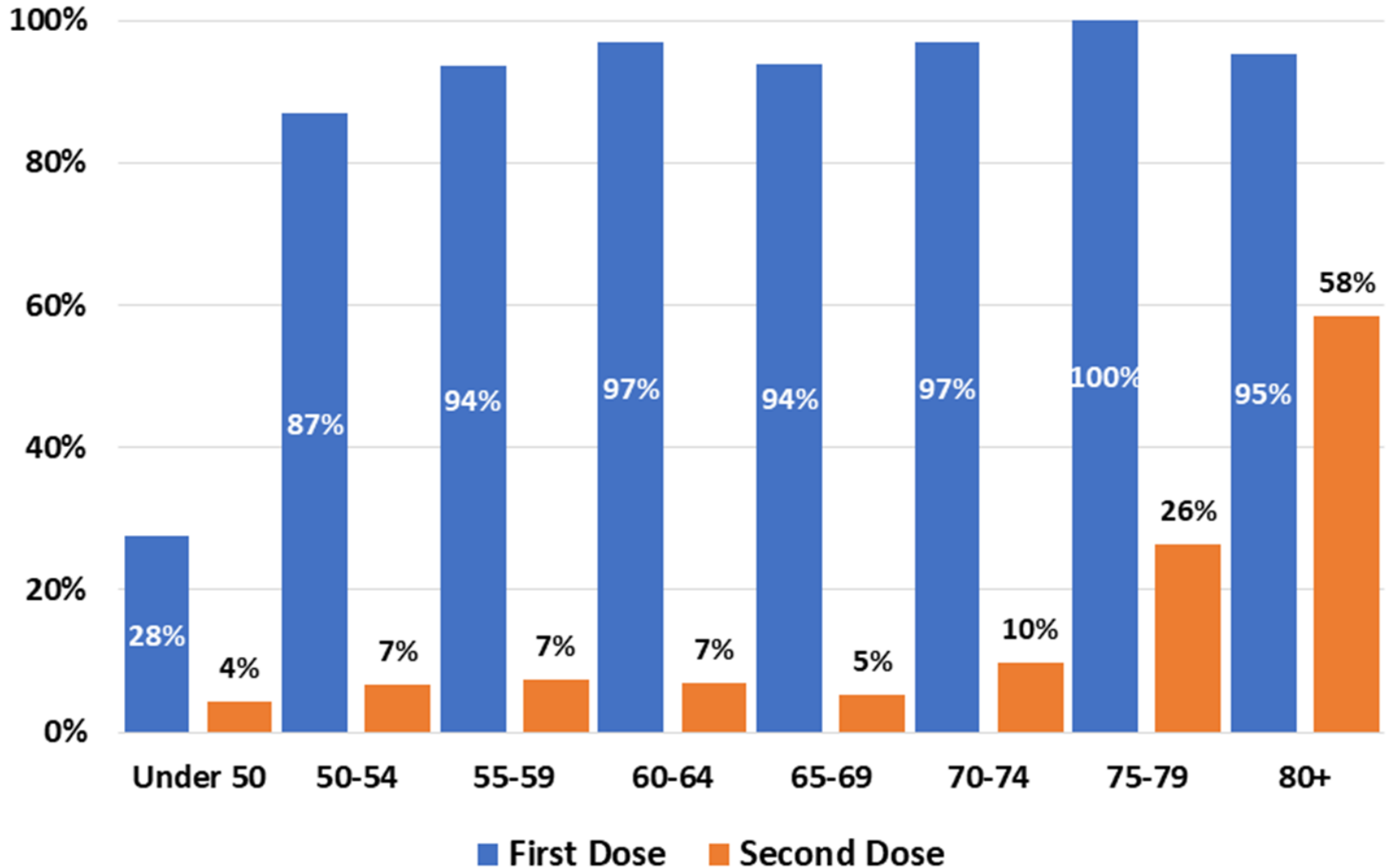
# Proportion of adults fully vaccinated over time for each nation to 17<sup>th</sup> March



Data from <https://coronavirus.data.gov.uk/>

Thanks to Bob Hawkins for the chart

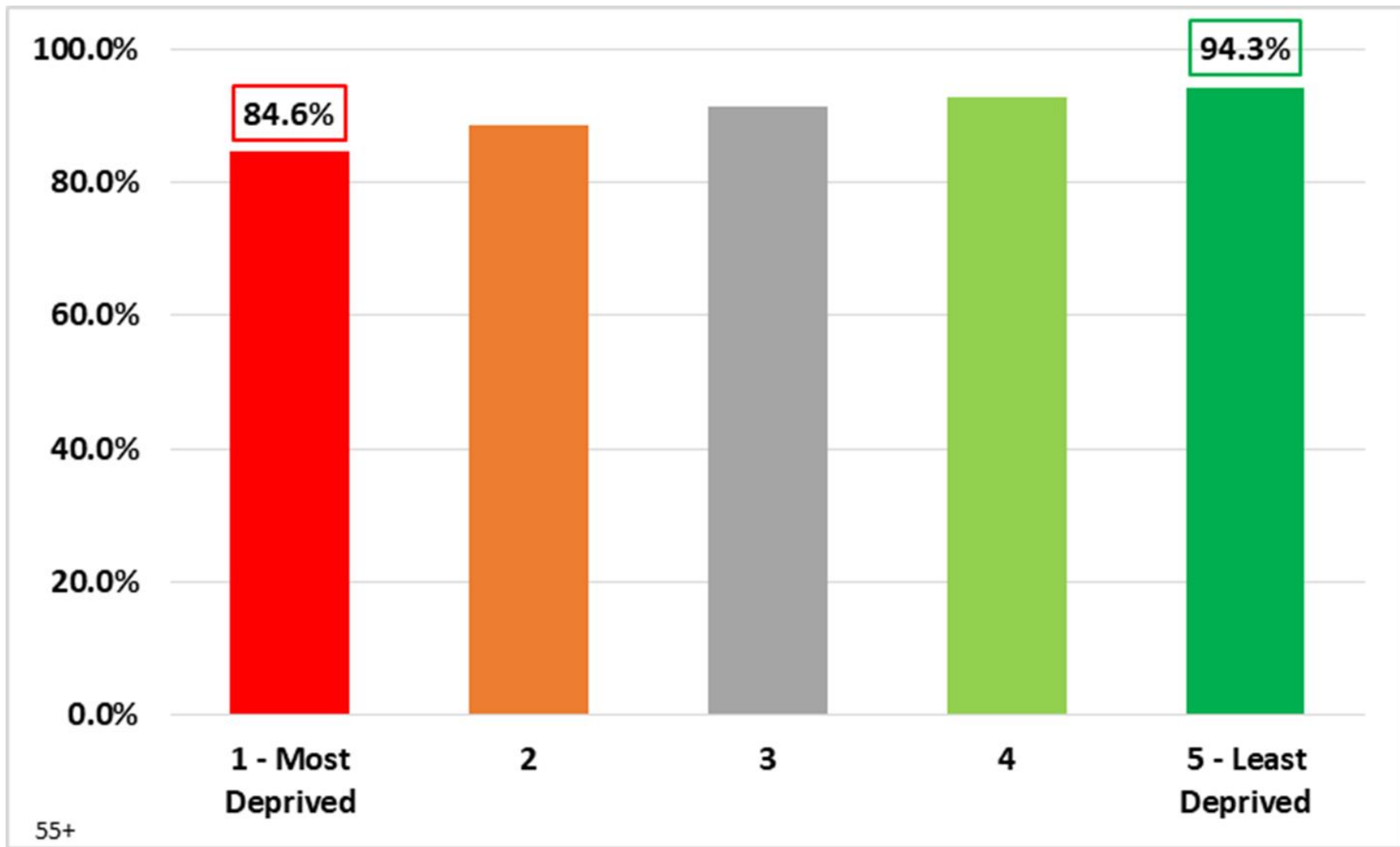
# First and Second Dose Coverage by Age for England to Apr 4



Data from <https://www.england.nhs.uk/statistics/statistical-work-areas/covid-19-vaccinations>

Thanks to Bob Hawkins for the chart

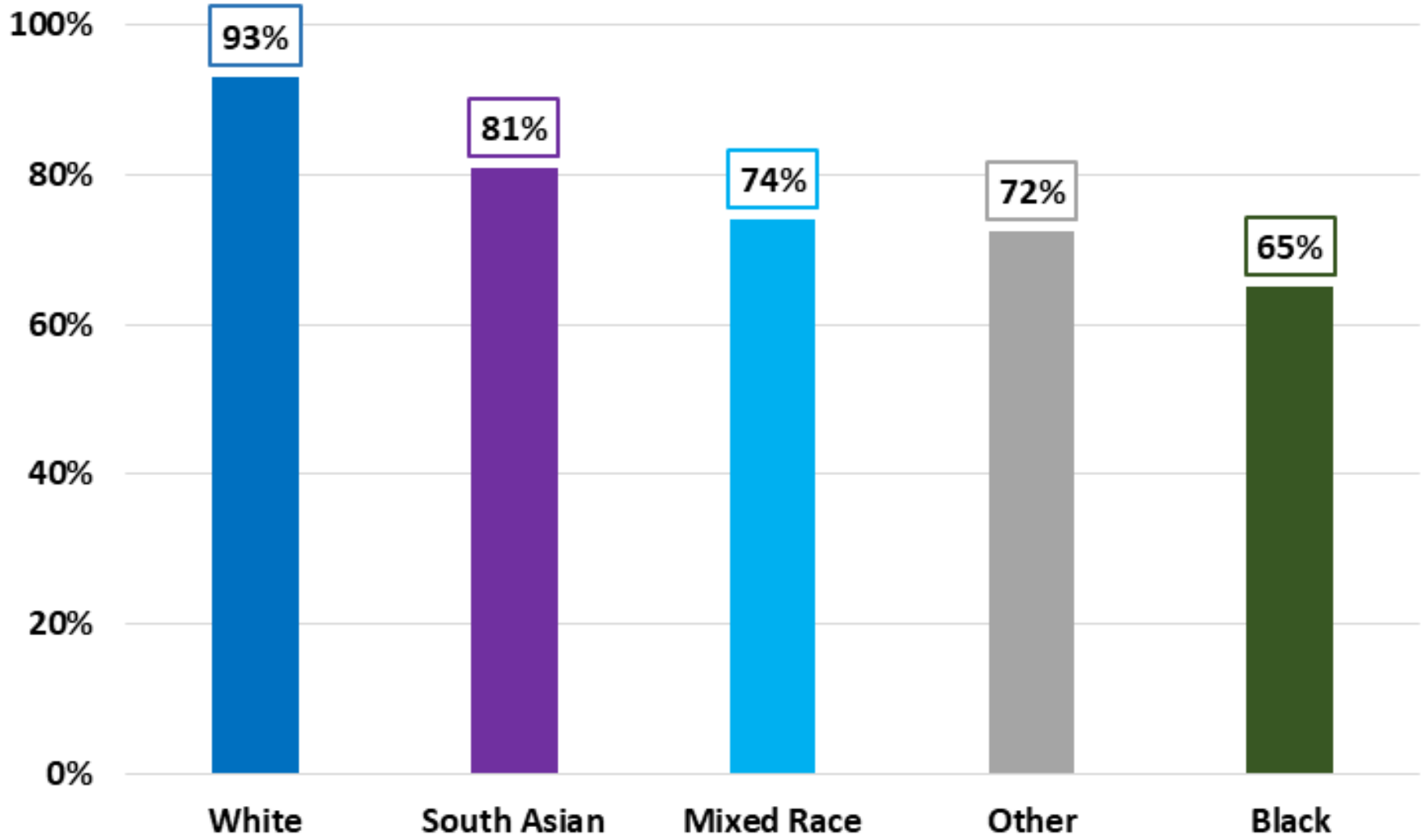
# First Dose Coverage by Deprivation for over 55s for England to Apr 1



Data from <http://opensafely.org/research/2021/covid-vaccine-coverage>

Thanks to Bob Hawkins for the chart

# First Dose Coverage by Ethnicity for over 55s for England to Apr 1



55+

Data from <http://opensafely.org/research/2021/covid-vaccine-coverage>

Thanks to Bob Hawkins for the chart

# The ethnicity gap should be addressable as attitudes are changing

## Would you take a vaccine against COVID-19? *By ethnicity*

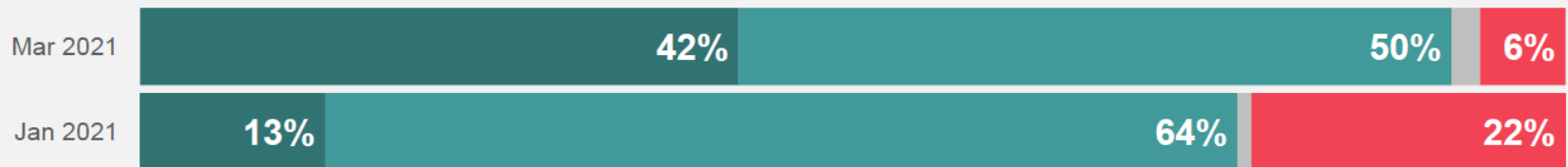
If a vaccine against COVID-19 was available for anyone who wanted it, how likely or unlikely would you be to take the vaccine?

■ Already had the vaccine/appt. booked 
 ■ Definitely/probably would take it 
 ■ Probably/definitely would not take it

### Among White Britons



### Among Ethnic Minority Britons



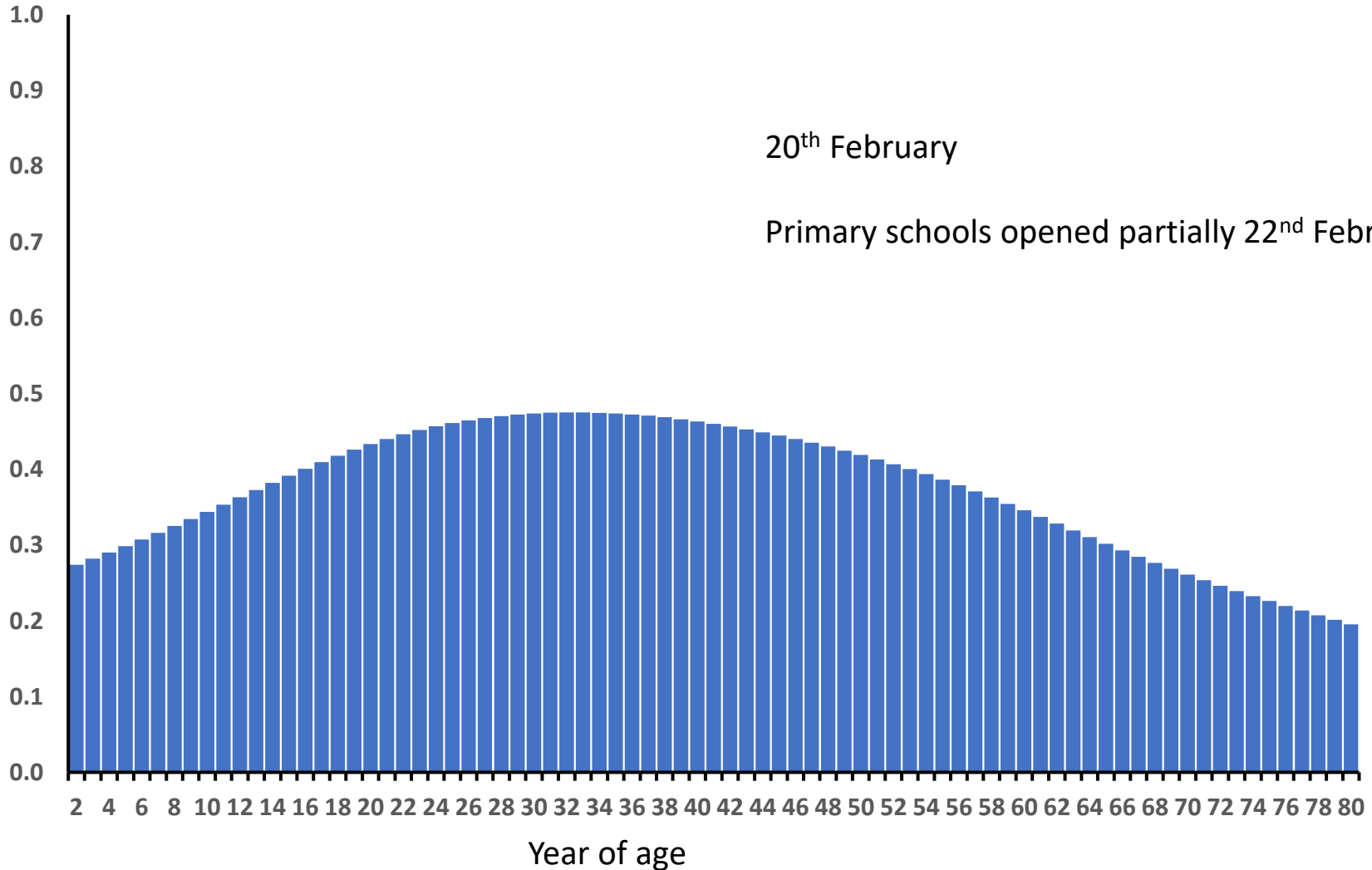
Base: 8352 UK adults 16+, KnowledgePanel online survey, 18-24 March 2021  
Including adults who are White Britons (7819) and ethnic minority Britons (451) in latest wave.



**Schools**

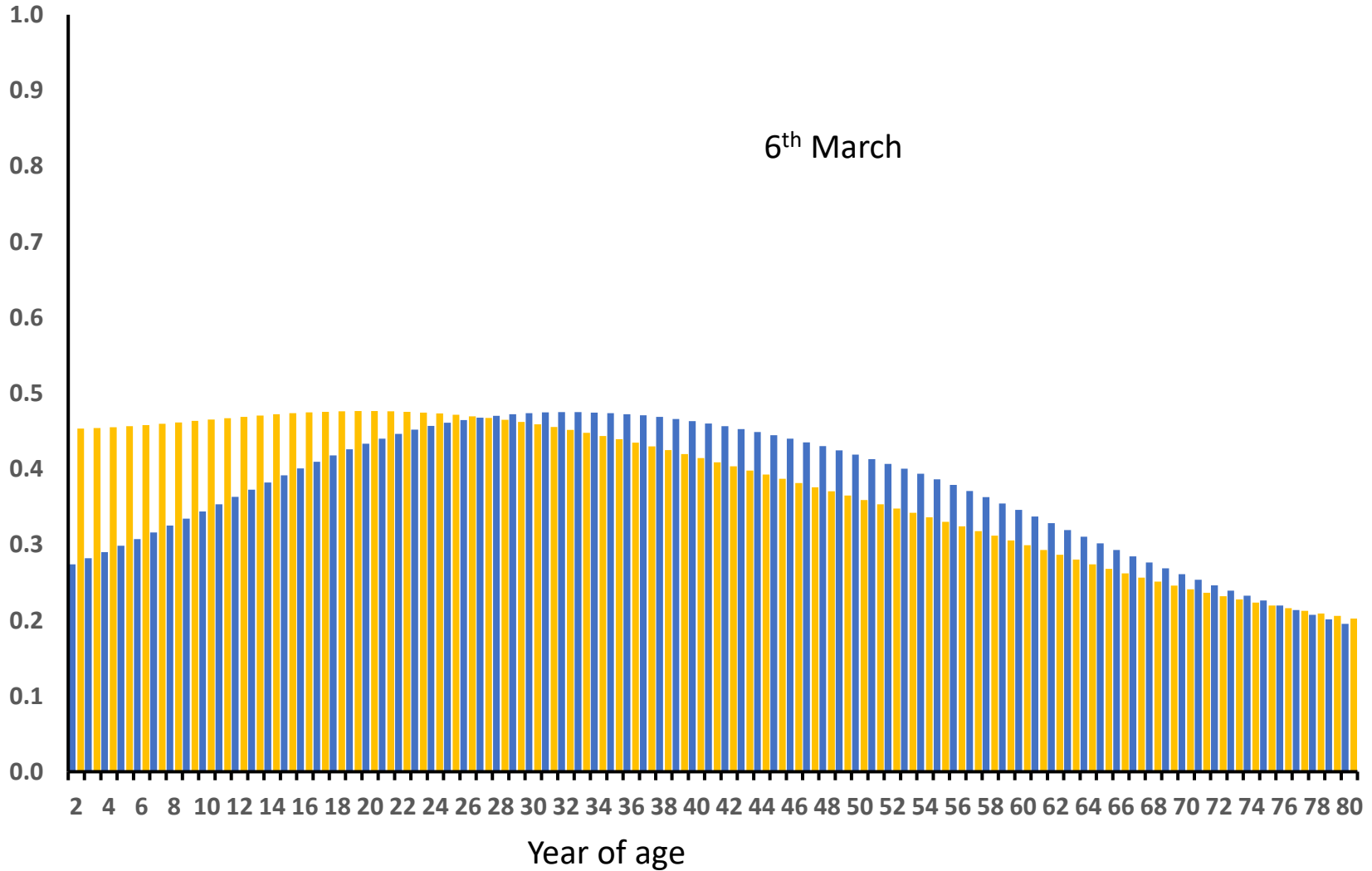
# Modelled age distribution of Covid in Scotland (ONS infection survey)

Proportion of age group with Covid



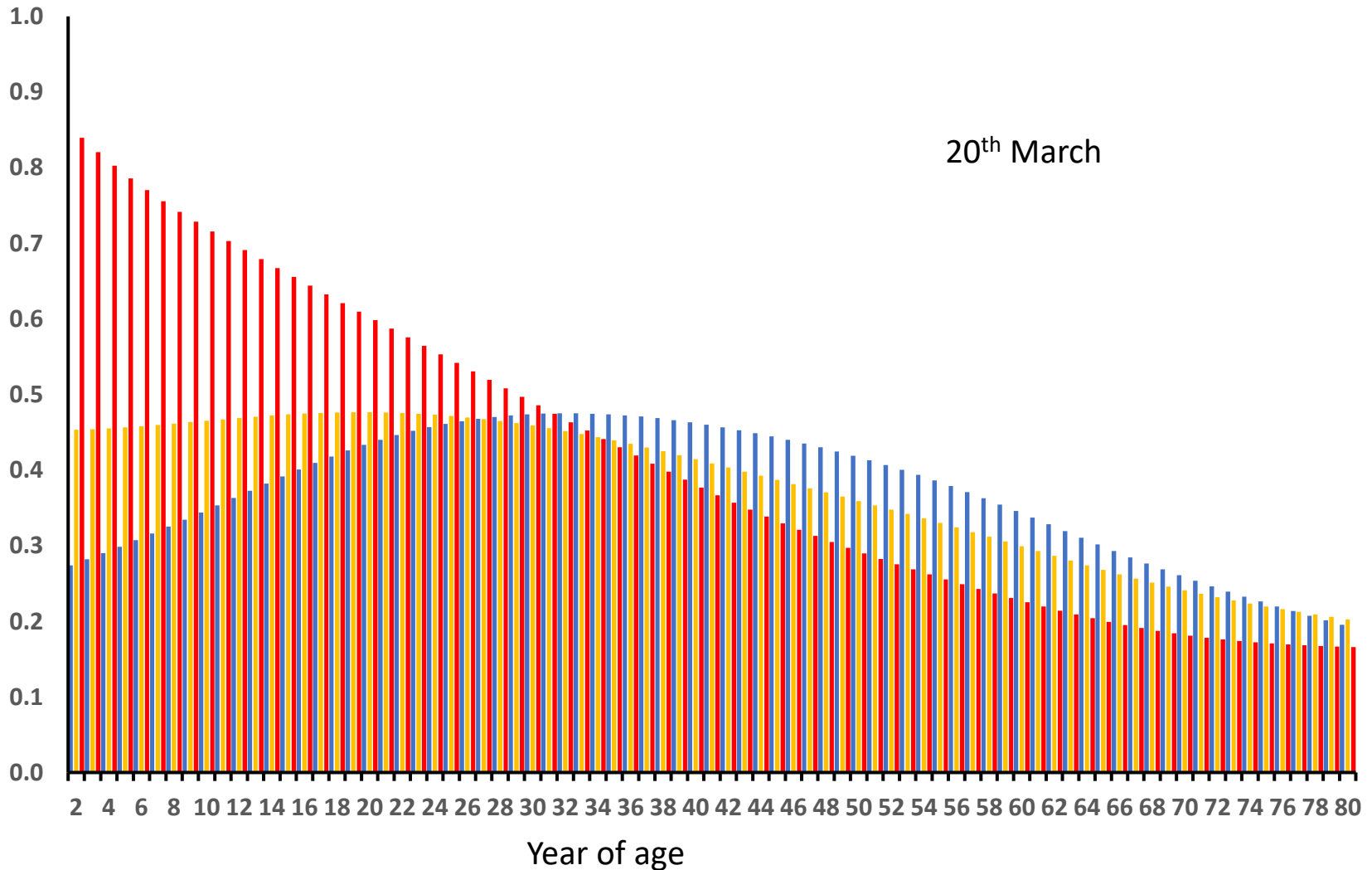
# Modelled age distribution of Covid in Scotland (ONS infection survey)

Proportion of age group with Covid



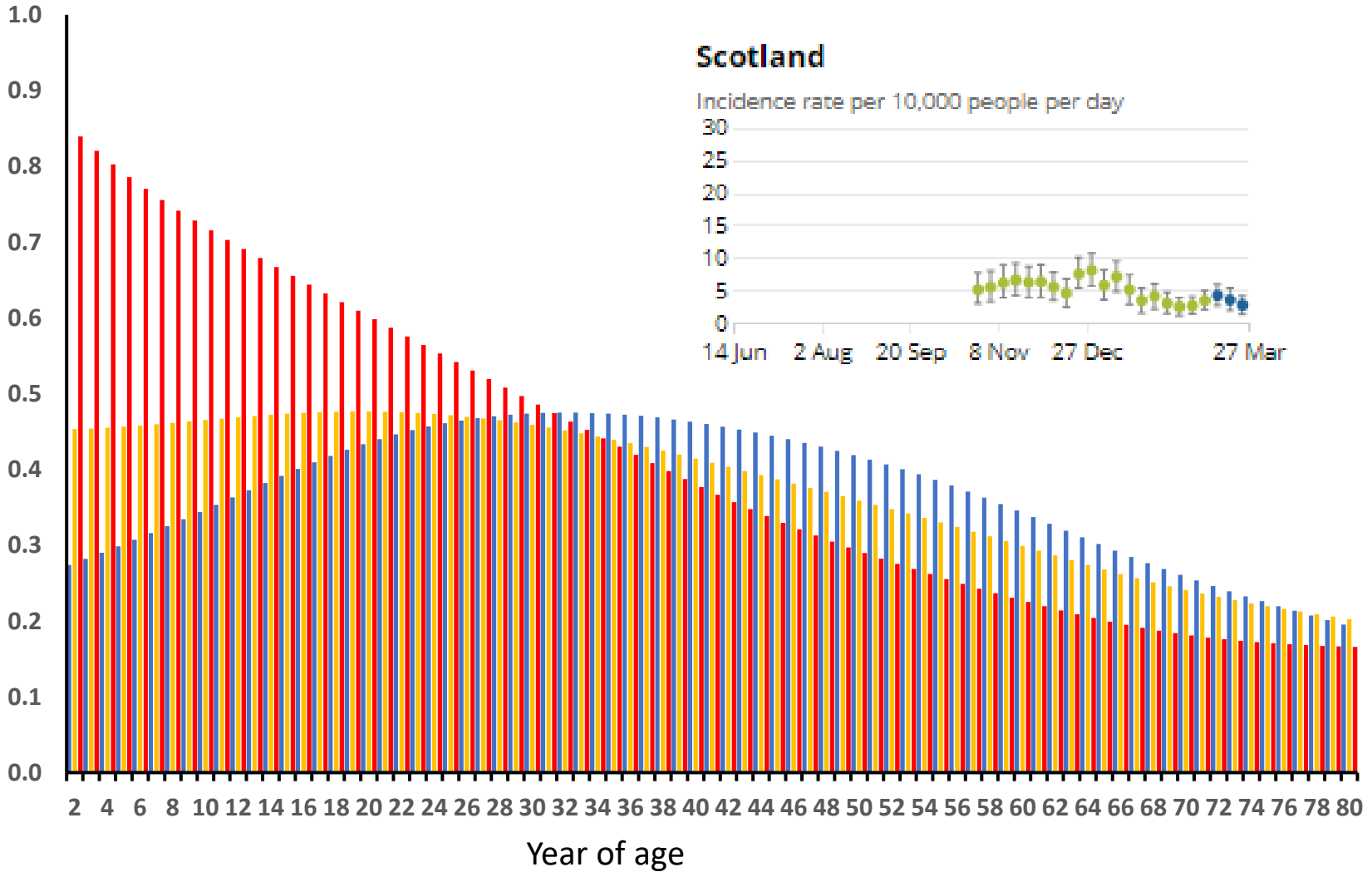
# Modelled age distribution of Covid in Scotland (ONS infection survey)

Proportion of age group with Covid



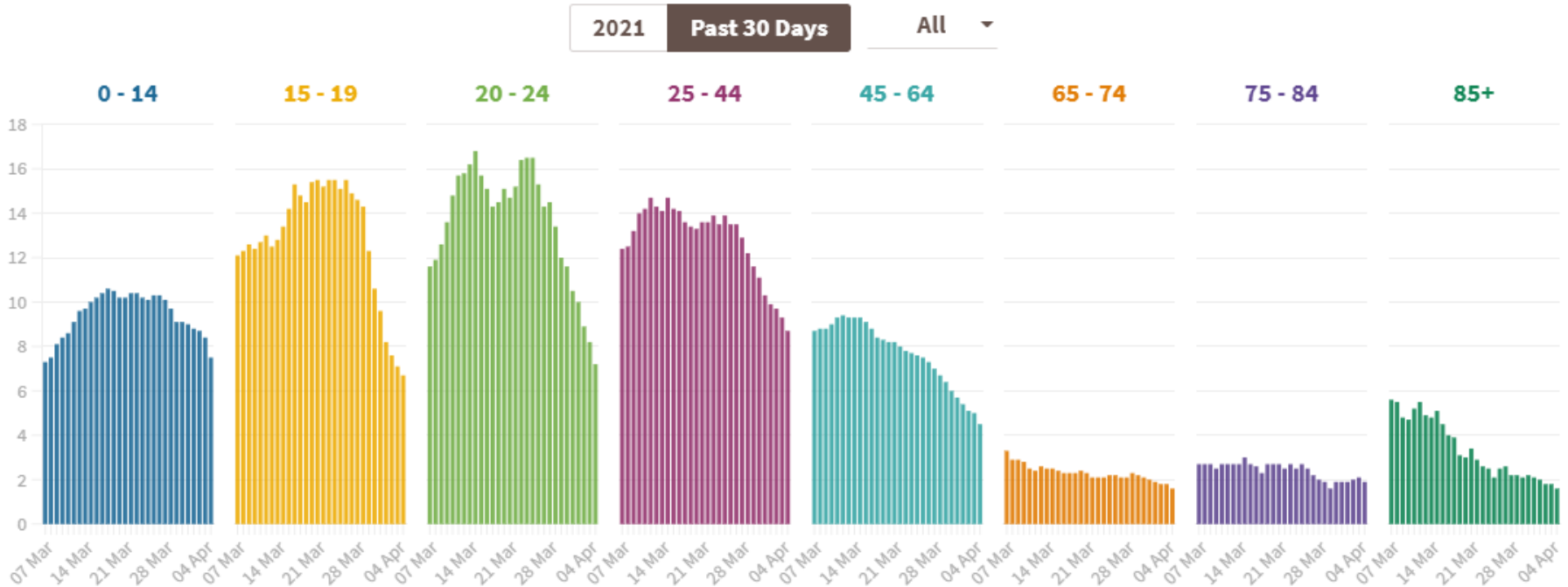
# Modelled age distribution of Covid in Scotland (ONS infection survey)

Proportion of age group with Covid



# Age distribution of confirmed cases (from testing) in Scotland over past month

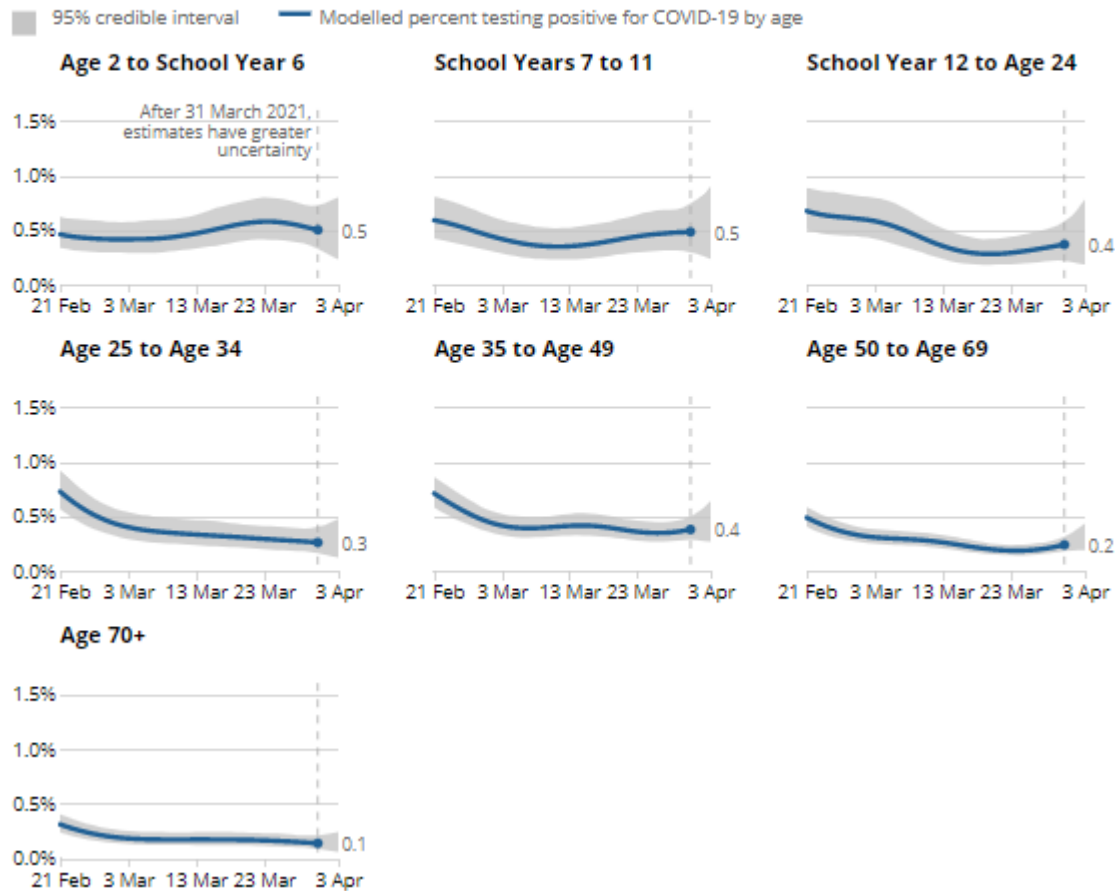
7 Day Case Rate in each Age Group, Per 100k Population



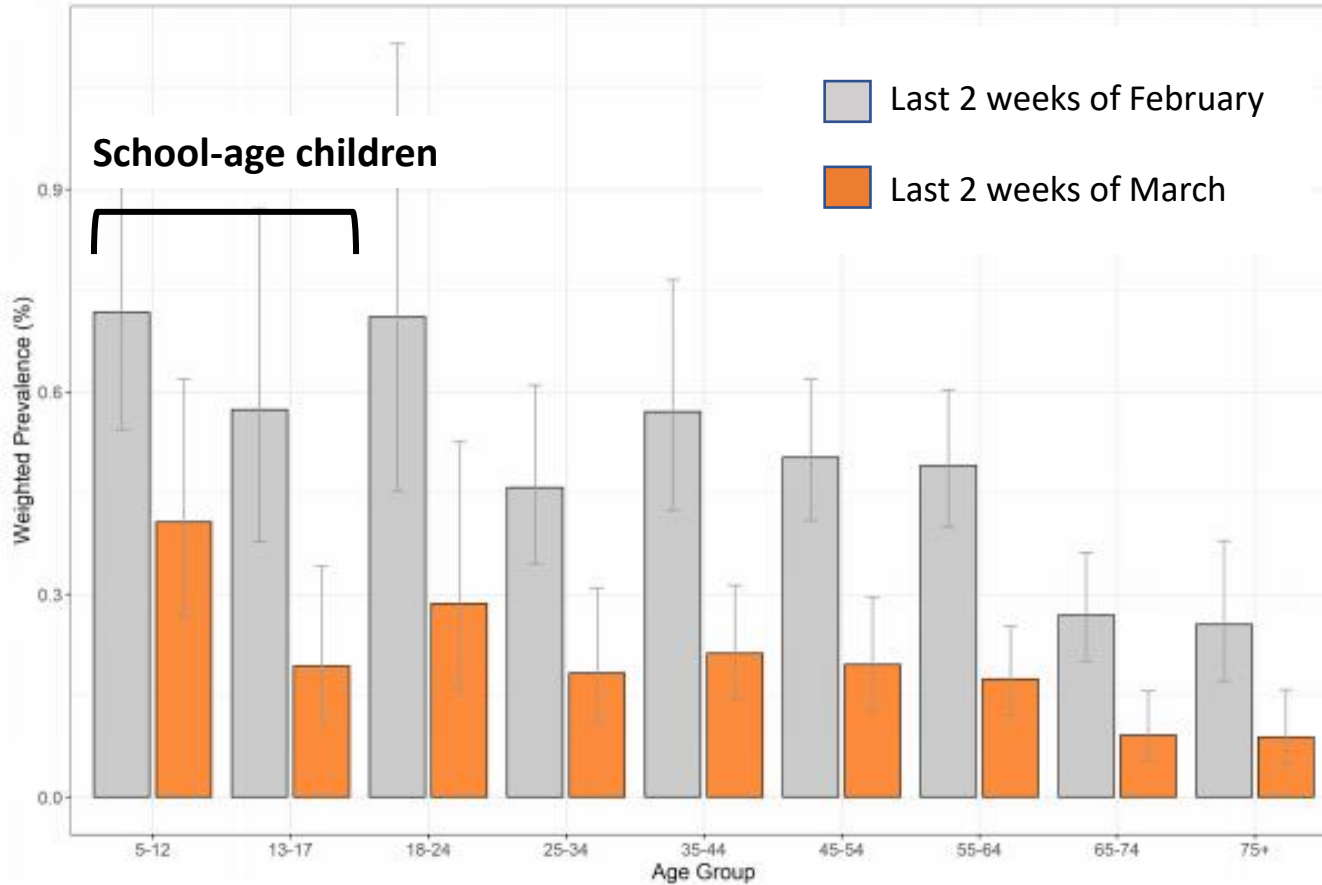
This shows the 7-day average number of new cases found each day in each age group, per 100k population, since the start of the year. Figures are based on specimen date, and exclude the 3 most recent days as these will be incomplete. You can use the drop down box to view a specific age group in more detail.

# Percentage of population testing positive by age in England (to 3<sup>rd</sup> April) (ONS infection survey)

Estimated percentage of the population testing positive for the coronavirus (COVID-19) on nose and throat swabs, daily, by age group since 21 February 2021, England



# Age distribution of cases – Imperial REACT study (England)



**Figure 4.** Weighted prevalence of swab-positivity by age groups for rounds 9 and 10. Bars show 95% confidence intervals. See Table 4.



Mass testing

## Testing policy in England



The image is a screenshot of the BBC News website. At the top, there is a navigation bar with the BBC logo on the left, a search bar containing the text "Living room son...", and several menu items: "Home", "News", "Sport", "Weather", "iPlayer", and "So". Below the navigation bar is a large red banner with the word "NEWS" in white capital letters. Underneath the banner is a horizontal menu with links to various news categories: "Home", "Brexit", "Coronavirus", "UK", "World", "Business", "Politics", "Tech", "Science", "Health", and "Family & Education". Below this menu is another horizontal menu with links to regional news: "UK", "England", "N. Ireland", "Scotland", "Alba", "Wales", "Cymru", and "Local News". The "UK" link is underlined. The main headline is "Covid: Tests to be offered twice-weekly to all in England" in a large, bold, dark blue font. Below the headline is a timestamp "🕒 3 days ago".

**BBC** Living room son... Home News Sport Weather iPlayer So

# NEWS

Home | Brexit | Coronavirus | UK | World | Business | Politics | Tech | Science | Health | Family & Education

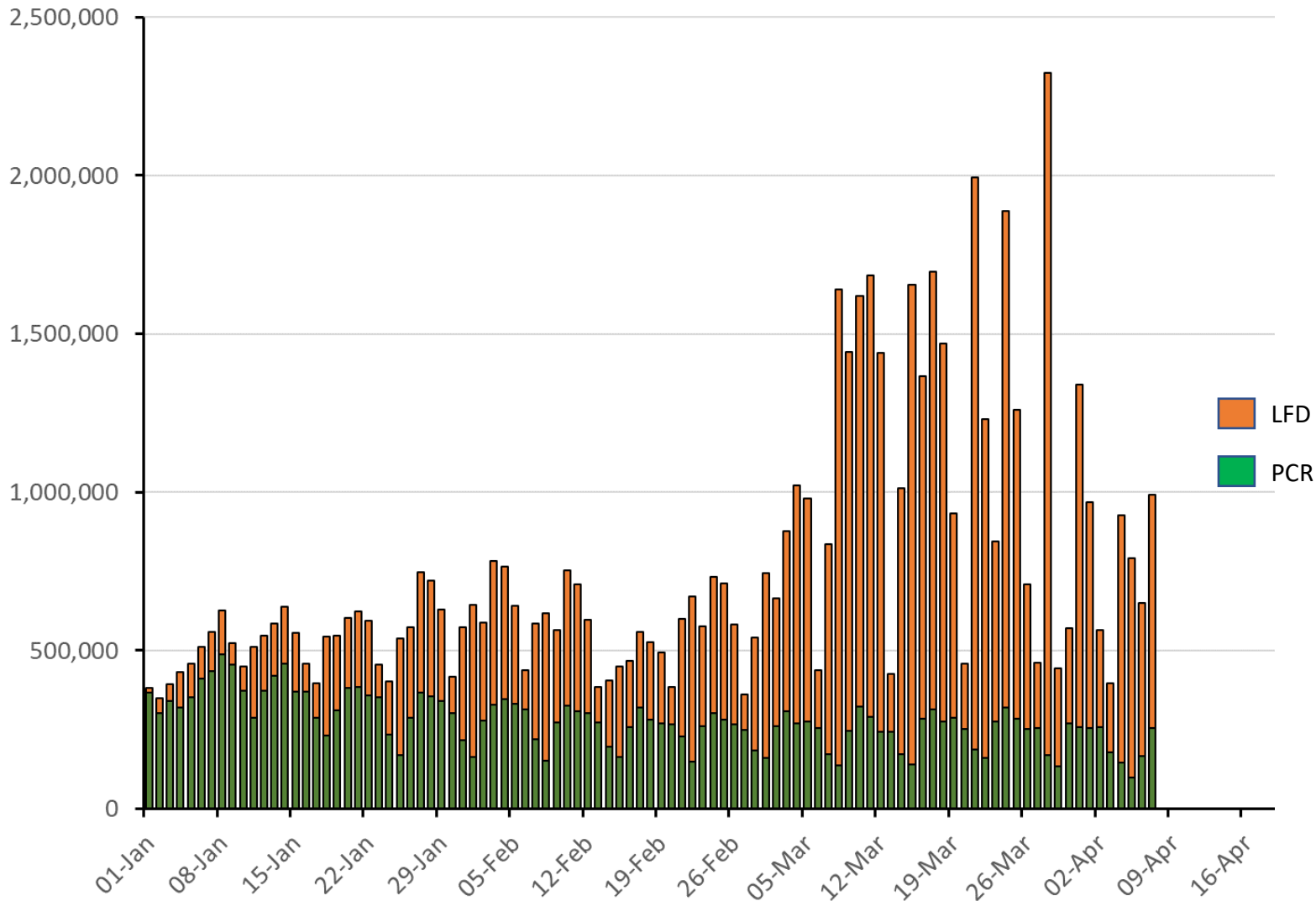
UK | England | N. Ireland | Scotland | Alba | Wales | Cymru | Local News

## Covid: Tests to be offered twice-weekly to all in England

🕒 3 days ago

# Testing in England (to 7<sup>th</sup> April)

Number of tests performed each day by LFD or PCR type



## Testing in England (to 7<sup>th</sup> April)

Government is changing policy on Lateral Flow Device tests (LFDs):

1- **All** LFD positive tests will be subject to PCR testing (to help track variants & reduce false positives)

- This is a good thing but note it will affect case numbers (reduce positives)

## Testing in England (to 7<sup>th</sup> April)

Government is changing policy on Lateral Flow Device tests (LFDs):

1- **All** LFD positive tests will be subject to PCR testing (to help track variants & reduce false positives)

- This is a good thing but note it will affect case numbers (reduce positives)

2 – All adults to be encouraged to do twice weekly LFDs at home – this has many potential problems:

- Not effective & no incentive to test **if you cannot isolate if positive**
- Tests are unpleasant and difficult to do properly – little incentive to test if you feel fine -> risks use being among a motivated subset and then for new symptoms

## Testing in England (to 7<sup>th</sup> April)

Government is changing policy on Lateral Flow Device tests (LFDs):

1- **All** LFD positive tests will be subject to PCR testing (to help track variants & reduce false positives)

- This is a good thing but note it will affect case numbers (reduce positives)

2 – All adults to be encouraged to do twice weekly LFDs at home – this has many potential problems:

- Not effective & no incentive to test **if you cannot isolate if positive**
- Tests are unpleasant and difficult to do properly – little incentive to test if you feel fine -> risks use being among a motivated subset and then for new symptoms instead of PCR. **This would be worrying**
- There are about 44 million adults in England. Even if most people don't do it, that's potentially 20 million tests twice a week in people who don't have Covid. Of those 20 million, there could be somewhere between 6,000-20,000 false positive tests –

\*assumes specificity of 99.9% - 99.97% (maximum govt estimate).

## Testing in England (to 7<sup>th</sup> April)

Government is changing policy on Lateral Flow Device tests (LFDs):

1. LFDs will be used to screen for COVID-19 (to help track variants & reduce false positives)

2. Contact tracing will be triggered by a positive LFD result, but will be stopped automatically after receipt of a negative confirmatory PCR test, if the PCR was taken within two days of the positive LFD result.

3. It remains essential that anyone who gets a positive result from an LFD result self-isolates immediately, as must other members of their household, while they get a confirmatory PCR test within two days.

fine -> risks

instead of PCR. **This would**

- There are about 44 million adults in England. If 20 million people are tested twice a week, that's potentially 20 million tests twice a week in people who are not infected. If 20 million, there could be somewhere between 6,000-20,000 false positives.

## Testing in England (to 7<sup>th</sup> April)

Government is changing policy on Lateral Flow Device tests (LFDs):

1- **All** LFD positive tests will be subject to PCR testing (to help track variants & reduce false positives)

- This is a good thing but note it will affect case numbers (reduce positives)

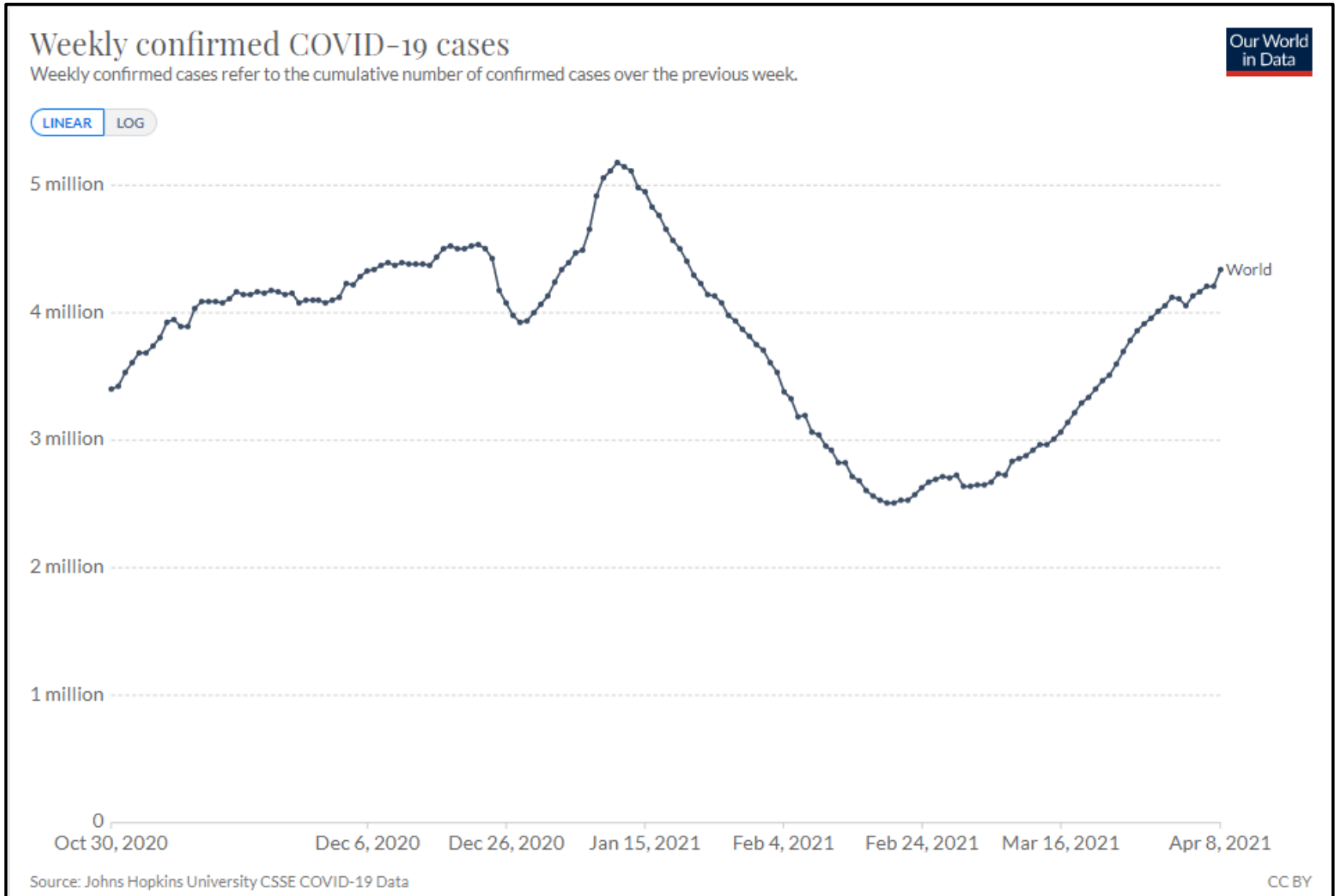
2 – All adults to be encouraged to do twice weekly LFDs at home – this has many potential problems:

- Not effective & no incentive to test **if you cannot isolate if positive**
- Tests are unpleasant and difficult to do properly – little incentive to test if you feel fine -> risks use being among a motivated subset and then for new symptoms instead of PCR. **This would be worrying**
- There are about 44 million adults in England. Even if most people don't do it, that's potentially 20 million tests twice a week in people who don't have Covid. Of those 20 million, there could be somewhere between 6,000-20,000 false positive tests – **each time.**
- **If used as intended, there will be 1-4 days of isolation for false positives while they wait confirmatory PCR. Will there be financial compensation? Support for suddenly disrupted plans (e.g. kids missing school, caring responsibilities)?**



It's not over yet

# World cases of Covid October 2020 – April 2021



## Summary

Cases, hospitalisations and deaths are flat or falling in all nations.

As we emerge from lockdown, the most deprived areas have case rates almost 3 times higher than the least deprived areas.

Vaccination going well – mostly second doses until end of May. Disparities by deprivation and ethnicity persist.

There was a rise in cases in school age children after school reopened – these likely to reduce over Easter holidays.

The government's mass testing initiative has a lot problems.

As government announces plans for foreign holidays, the world is experiencing another Covid surge.